

Overall Shorts Instructions

Model: A001



PICTURE OF FINISHED PROJECT

SUPPLY CHECKLIST

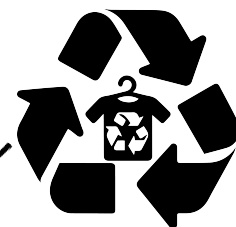
- MAIN FABRIC:** 2 yards (canvas, denim, twill)
- OVERALL BUCKLES:** 2 sets (any style)
- JEAN BUTTONS:** 2 (any style)
- INTERFACING:** .25 yards (lightweight)



LINK TO STEP BY STEP VIDEO INSTRUCTIONS

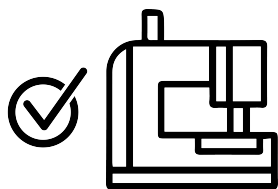
All supplies can be changed and switched to your liking. Get creative and have fun picking out custom materials.

- Recycling/repurposing old clothing and furniture into fabric not only gives these items a second life but also significantly contributes to reducing waste and promoting sustainable living.
- List of a few common items: Upholstery Fabric, Curtains and Draperies, Bed Linens and Towels, Sweaters, Denim (jeans and jackets), Sweater, Quilts, Tote bags, Cleaning rags, T-Shirts. Any type of fabric can be utilized and recycled.



RECOMMENDED SEWING MACHINES

THESE ARE JUST RECOMMENDED MACHINES. YOU CAN USE ANY MACHINE TO MAKE ALL PROJECTS. THE MACHINE WILL HELP GIVE YOUR SEWING PROJECT A PROFESSIONAL FINISH

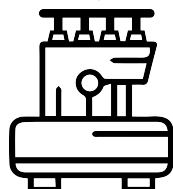


DOMESTIC SEWING MACHINE

- This machine creates stitches by interlocking a top thread, threaded through the needle, with a bottom thread from the bobbin below the fabric, forming secure stitches in the material.
- Used to lock seams together with exposed raw edge.

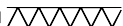
STRAIGHT STITCH - - - - -

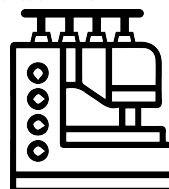
ZIG-ZAG STITCH ~~~~~



SERGER (OPTIONAL)

- This machine creates stitches by using multiple threads to encase the fabric edges, simultaneously trimming excess seam allowance, for a neat, professional, and stretch-resistant finish.
- Used to lock seams together with clean edge.

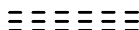
SERGE STITCH 

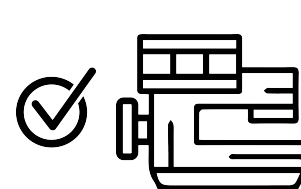


COVERSTITCH MACHINE (OPTIONAL)

- This machine creates professional-looking hems and seams by using two or more needles to form parallel rows of stitches on the top and a looper to interlock the thread on the bottom, providing stretchability and a clean finish to garments.
- Used for top stitching stretch knit fabrics.

COVERSTITCH STITCH  BOTTOM SIDE

 TOP SIDE



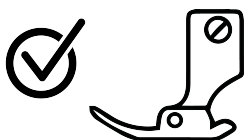
INDUSTRIAL SEWING MACHINE (OPTIONAL)

- This machine creates strong, precise stitches at high speeds, using a specialized mechanism suited for heavy-duty materials and designed for efficiency and durability in commercial manufacturing environments.
- Used for locking most seams together at a faster speed. This machine is only needed in bulk productions.

INDUSTRIAL STITCH - - - - -

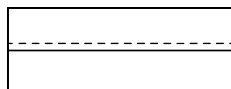
ATTACHMENTS, BINDERS, PRESSER FEET

THESE ARE RECOMMENDED TOOL TO ATTACH OR RUN ON YOUR MACHINES. YOU CAN USE THESE ON ALMOST ALL OF YOUR SEWING PROJECTS. THEY WILL HELP GIVE YOUR SEWING PROJECT A PROFESSIONAL FINISH



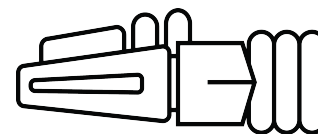
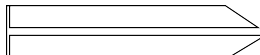
EDGE PRESSER FOOT

- An edge presser foot helps in sewing straight seams at precise distances from the fabric edge, making it easier to achieve uniform hems, topstitching, and decorative edges.
- Not needed but great to have around for professional finish.



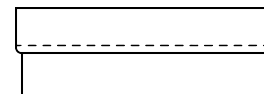
BIAS TAPE BINDER

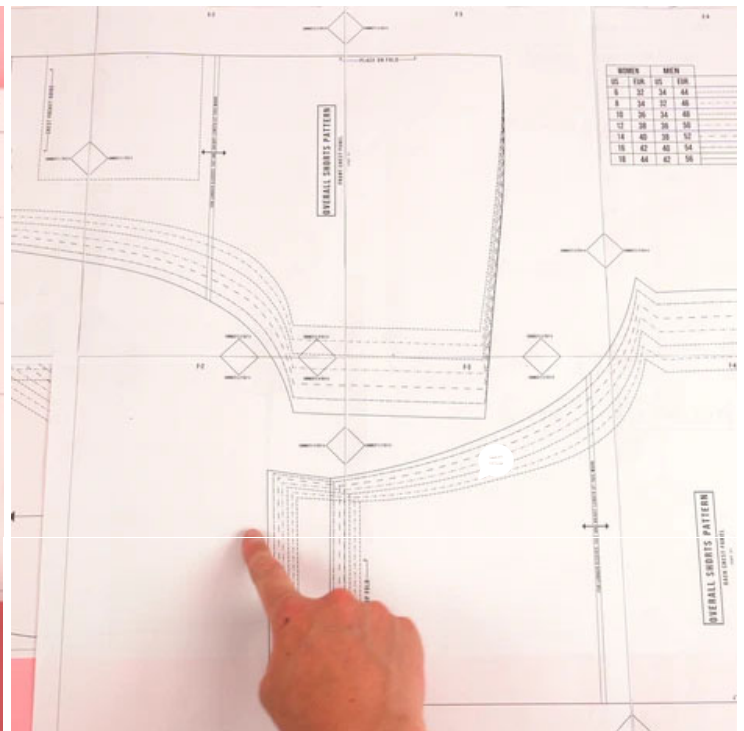
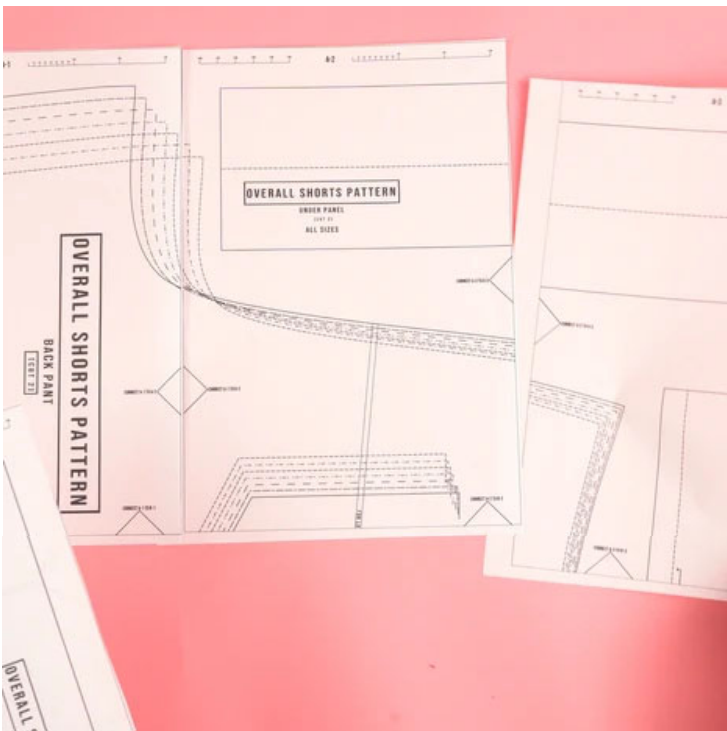
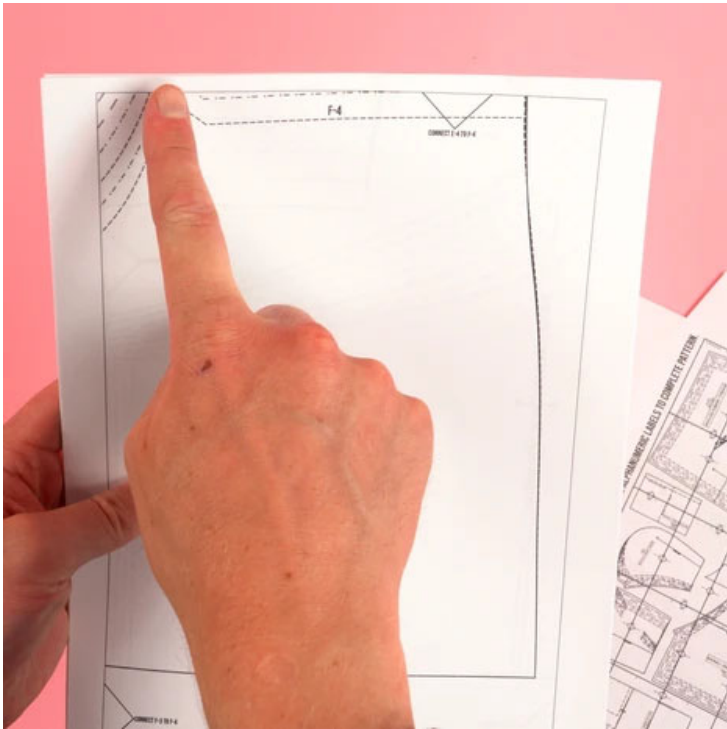
- A bias tape binder folds bias tape before you feed it into the sewing machine, allowing for clean and uniform binding of fabric edges in one step.
- Great way to go if you are making the project on a budget.



BIAS BINDER TAPE ATTACHMENT

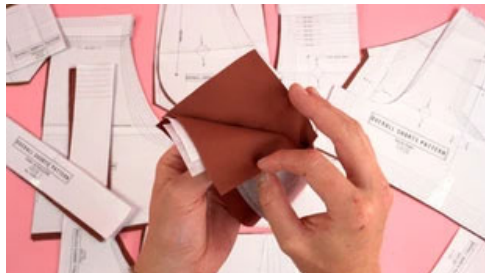
- A bias tape binder attachment folds and feeds bias tape into the sewing machine as you sew, allowing for clean and uniform binding of fabric edges in one step.
- Mainly used on industrial sewing machine. Speeds up the project by attaching and sewing at the same time.





1. When printing your sewing pattern, it's crucial to ensure that the pattern is printed at 100% scale or "actual size" in the print settings. This step is important to maintain the integrity of the design and ensure that the dimensions are accurate for your project. Not adjusting the print settings accordingly can result in a pattern that is either too small or too large, leading to potential issues with the fit and final outcome of your sewing project.
2. Trim the top and one of the side edges up to the margin box. This will make it help when line up the pages for a perfectly aligned pattern.
3. Layout the pattern lining up the diamonds and pages in alphanumeric.

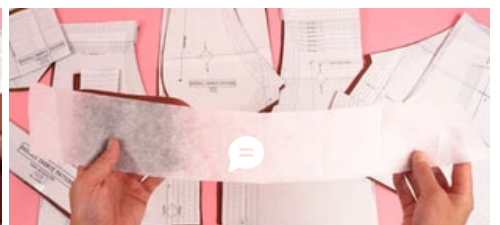
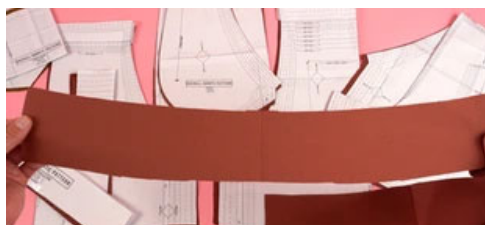
CLICK IMAGE TO ENLARGE



Under Panel: Cut 2 total. 2: Main Fabric | 2: Interfacing Halves (optional)



Waistband Back Panel: Cut 3 total. 2: Main Fabric | 1: Interfacing (optional)





Waistband Front Panel: Cut 3 total. 2: Main Fabric | 1: Interfacing (optional)



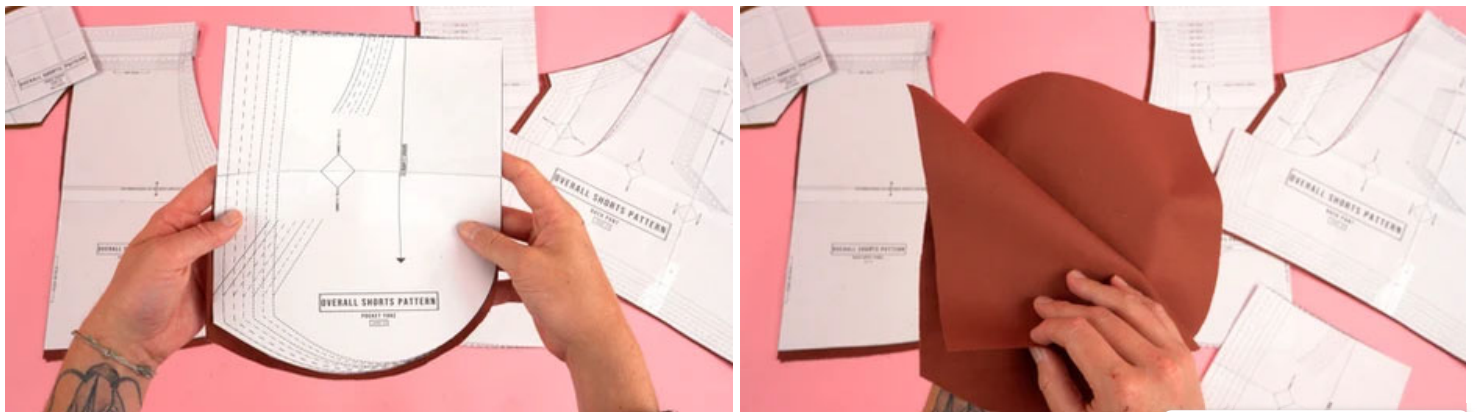
Front Interfacing Panel: Cut 4 total. 2: Main Fabric | 2: Interfacing (optional)



Strap Panel: Cut 2 total. 2: Main Fabric

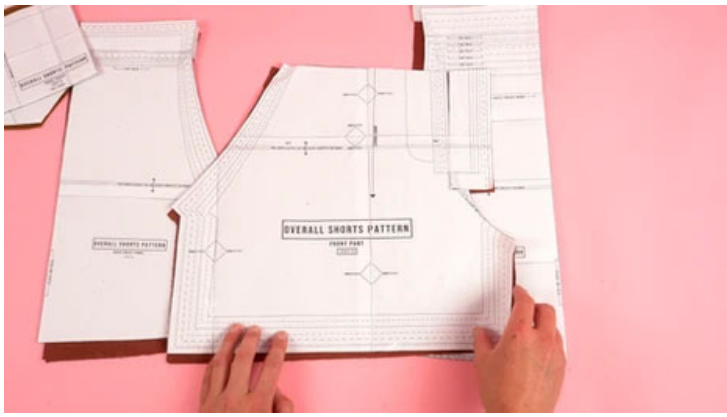


Pocket Panel: Cut 2 total. 2: Main Fabric

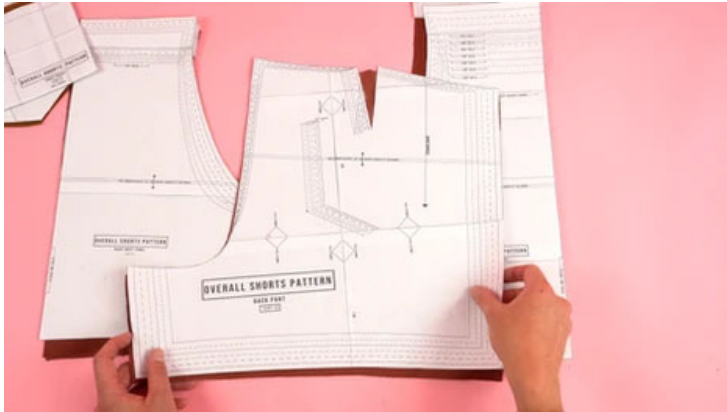


Pocket Yoke Panel: Cut 2 total. 2: Main Fabric

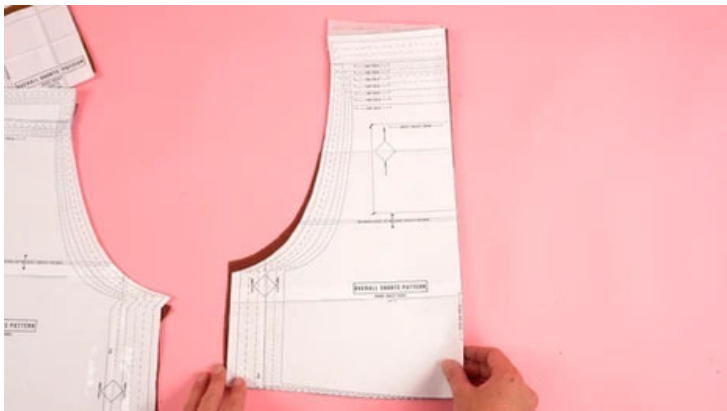
Let's Chat!



Front Pant Panel: Cut 2 total. 2: Main Fabric



Back Pant Panel: Cut 2 total. 2: Main Fabric



Front Chest Panel: Cut 1 total. 1: Main Fabric (on fold) | 1: Interfacing Top Edge Strip (optional)



Back Chest Panel: Cut 2 total. 2: Main Fabric | 1 Interfacing Top Edge Strip (optional)



Let's Chat!



Chest Pocket Panel: Cut 1 total. 1: Main Fabric

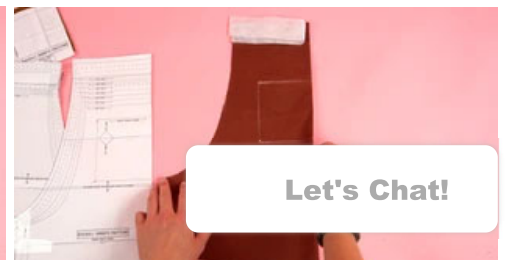
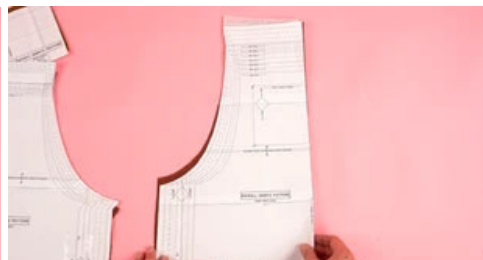
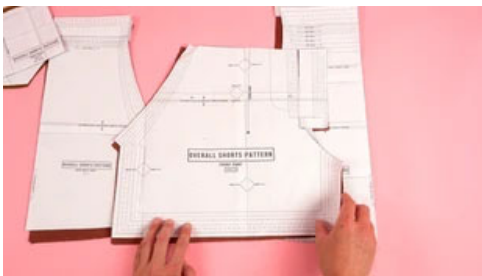


Back Pocket Panel: Cut 2 total. 2: Main Fabric

STEP BY STEP ASSEMBLY

STEP 1

[CLICK IMAGE TO ENLARGE](#)

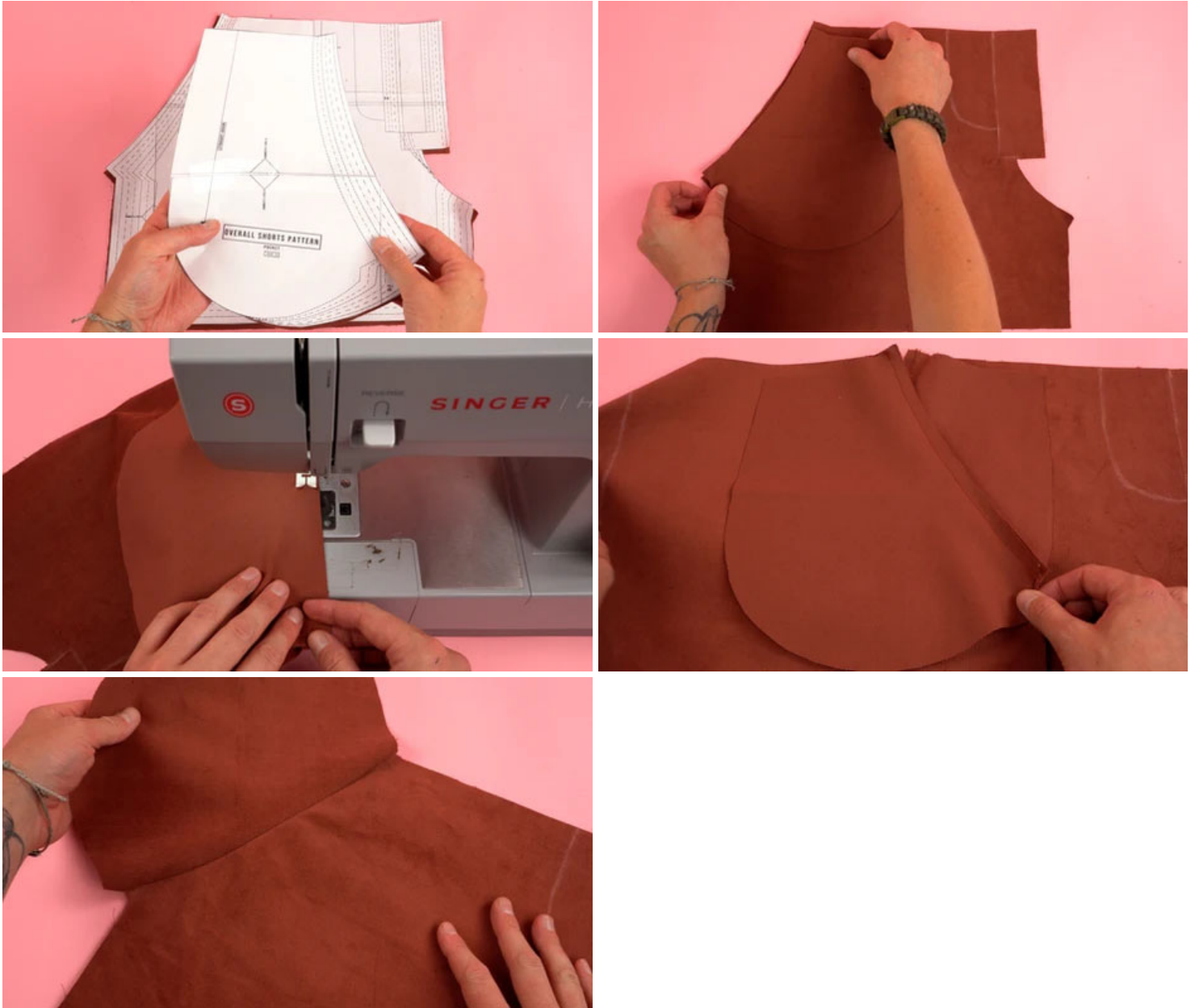


Let's Chat!



1. Before assembly locate FRONT PANT PANEL, BACK PANT PANEL, FRONT CHEST PANEL, AND BACK CHEST PANEL.
2. Mark guides, darts, and placements with chalk on each panel.

STEP 2



1. Grab both FRONT PANT and POCKET panels.
2. Place right sides of front pant and pocket panel together along upper left curved edge.
3. Sew curved edge at .25 inch seam allowance.
4. Repeat process for opposite front pant panel.

Let's Chat!

STEP 3

STEP 3



1. Fold POCKET panel under front pant panel.
2. Iron folded edge.
3. Repeat process for other front pant panel.
4. Topstitch along curved edge.

Pro Tip: Use an edge presser foot for uniform top stitching.

STEP 4





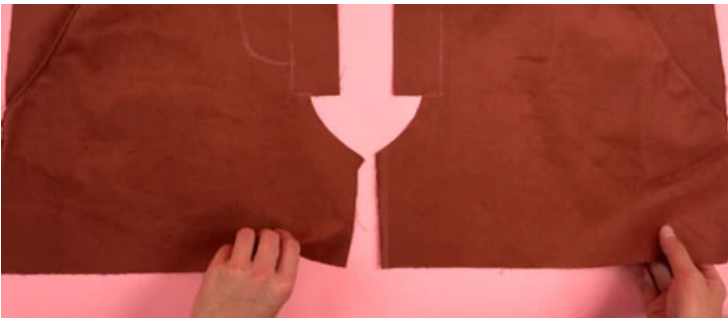
1. Grab POCKET YOKE panel.
2. Line up right side of pocket yoke with the pocket panel.
3. Stitch at .25 inch seam allowance around inside curved edge.
4. Repeat process for opposite side.

STEP 5



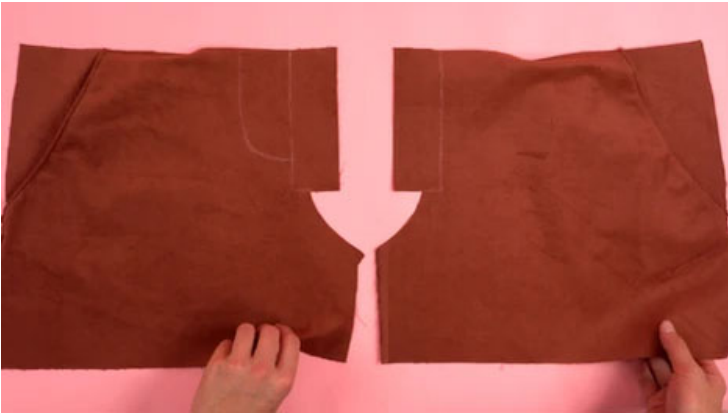
Let's Chat!





1. Line up POCKET YOKE top and side with FRONT PANT panel.
2. Stitch as close as you can to the outside edge on both the top and side where the pocket meets the front pant panel.
3. Repeat process for opposite front pant panel.

STEP 6



1. Take both FRONT PANT panels and place the right sides together.
2. Sew at .25 inch seam allowance along fly edge.
3. Do not sew the entire edge. Stop sewing after curved edge.

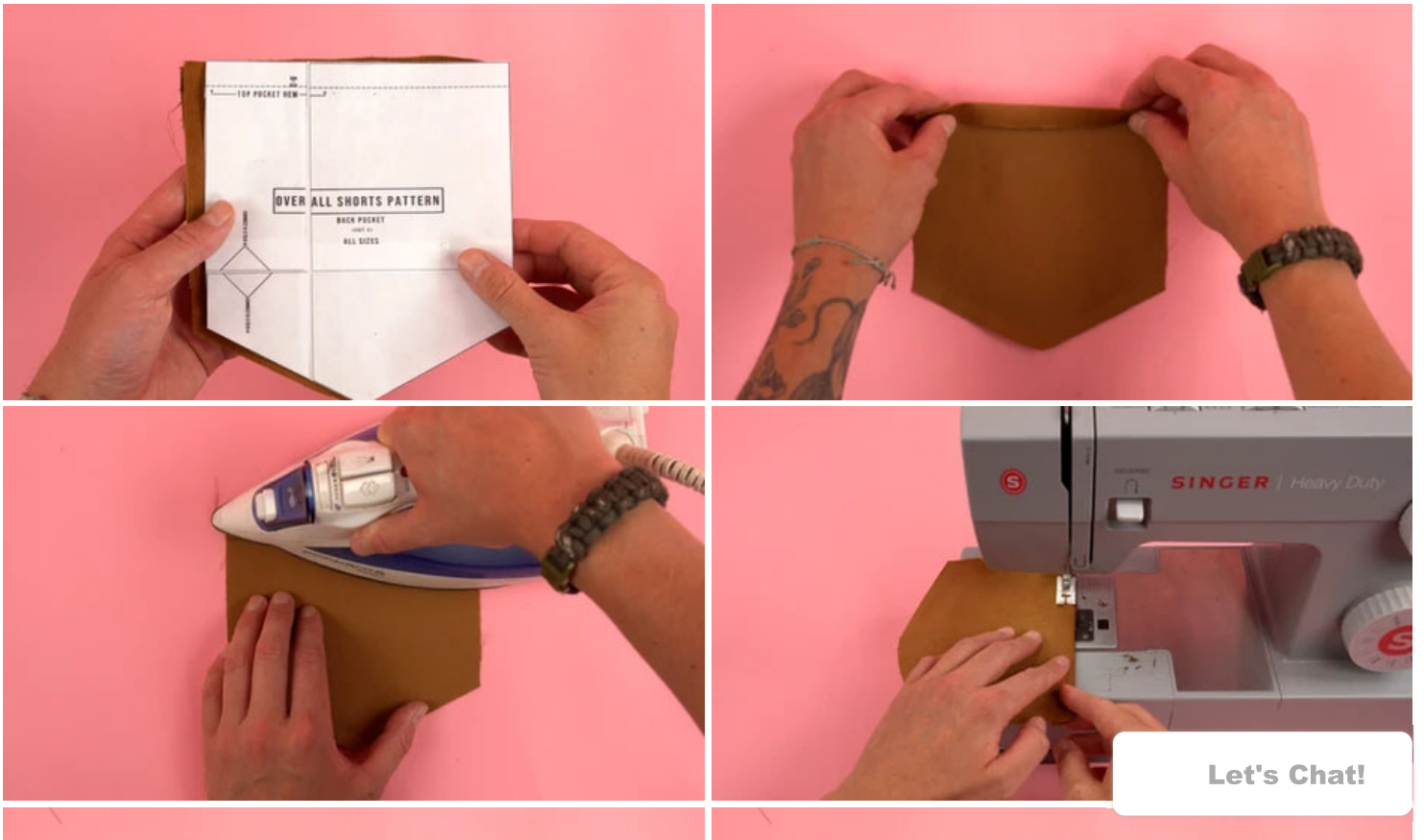
Let's Chat!

STEP 7



1. Open right side of FRONT PANT panel.
2. Fold in zipper fly opening and sew along curved guide.
3. After sewing curve. Sew vertical edge to the right of the curve.

STEP 8



Let's Chat!



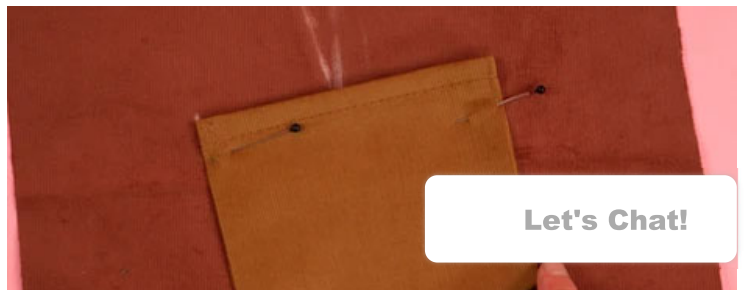
1. Grab BACK POCKET panel.
2. Fold top edge over .25 inch and another .25 inch hiding the raw edge.
3. Iron the folded edge.
4. Stitch folded edge and repeat process for the other pocket panel.

STEP 9



1. Fold the bottom edges of BACK POCKET panel over one time and iron.
2. Fold the side edges over one time and iron.
3. Repeat process for opposite back pocket panel.

STEP 10



Let's Chat!



1. Grab BACK POCKET panel and BACK PANT panel.
2. Using the guides on the back pant panel. Line up the pocket with the marked guides.
3. Pin back pocket panel in position.
4. Stitch into place leaving the top edge open.

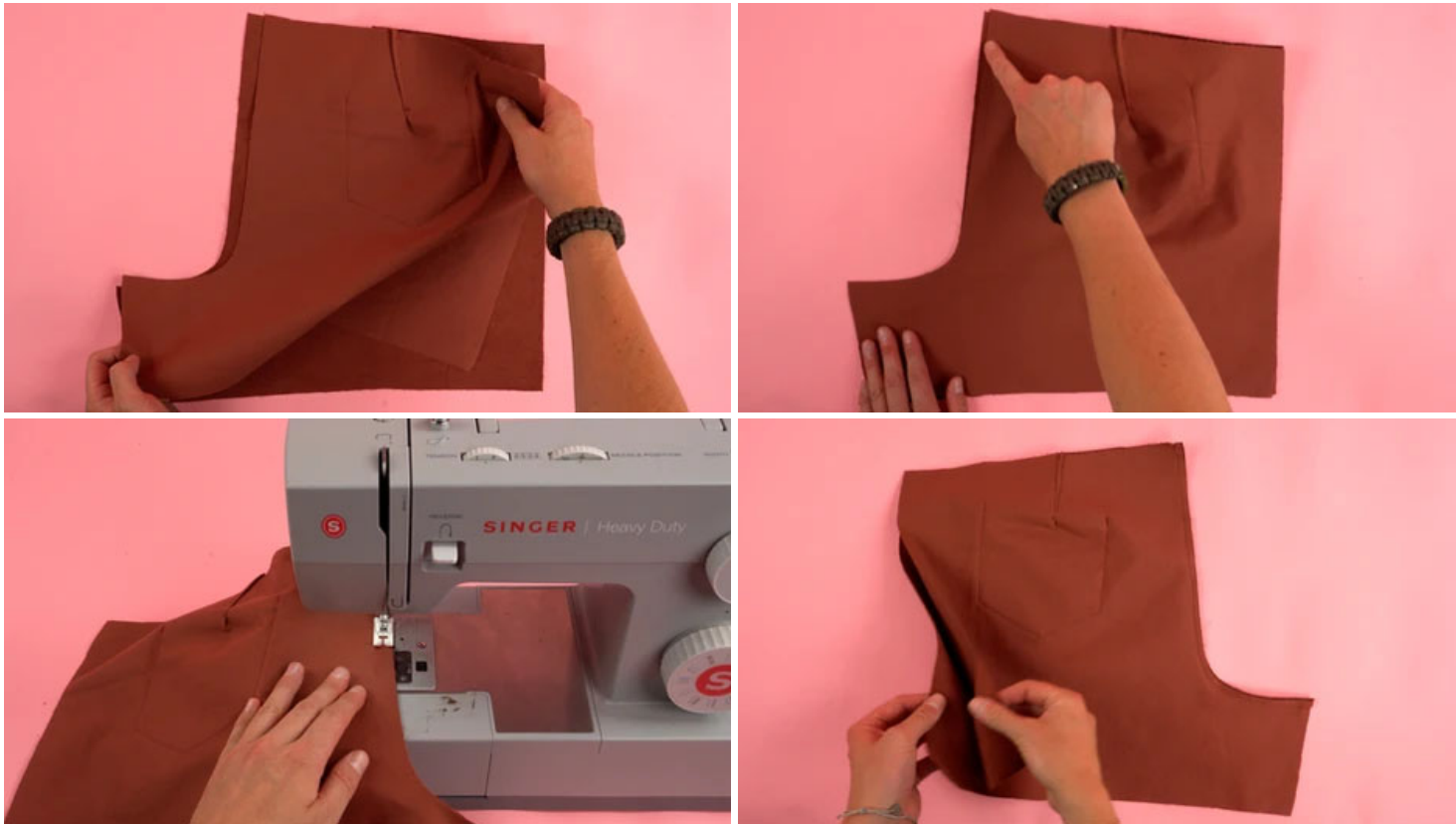
STEP 11



Let's Chat!

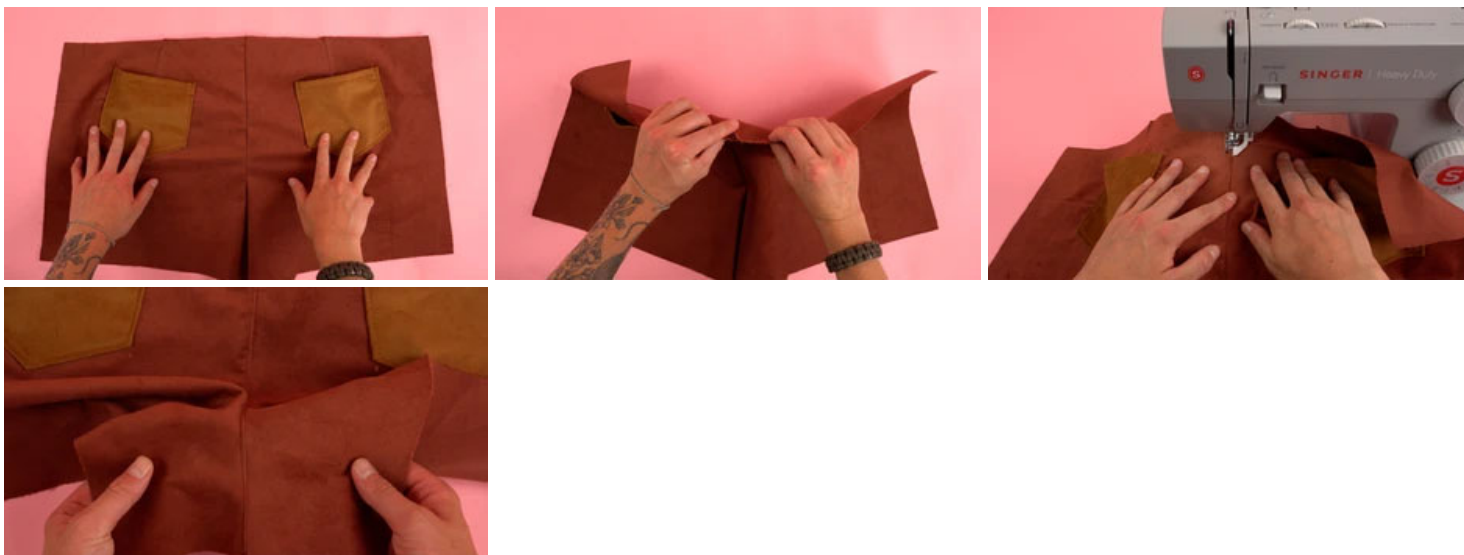
1. Fold the dart lines together with right sides touching.
2. Stitch dart on the right side of the fabric.
3. Make sure the excess fabric on the wrong side points towards the inside seam.

STEP 12



1. Place right sides of both back pant panels together.
2. Stitch inside curve edge at .25 inch seam allowance.

STEP 13



1. Roll seam allowance to the left or right.
2. Topstitch along the entire curved inside seam.

Let's Chat!

STEP 14



1. Grab one WAISTBAND BACK panel and interfacing.
2. Iron interfacing to wrong side of WAISTBAND BACK panel.

STEP 15



1. Grab both WAISTBAND BACK panels.
2. Place the right sides of the interfaced panel and back pant panel together.
3. Grab opposite waistband panel (non interfaced panel) and place the right side of the waistband panel to the wrong side of the back pant panel.
4. Line up the centers of both waistband back panels with the center of the back pant panel.
5. Pin waistband panels on position.
6. Sew at .25 inch seam allowance along top edge of waistband.

Let's Chat!

STEP 16



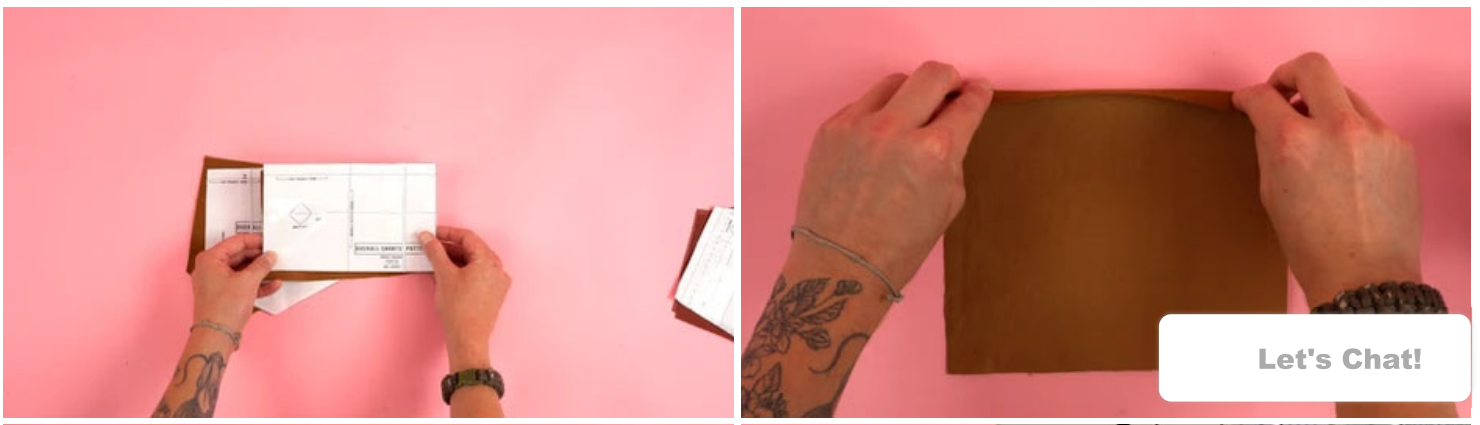
1. Fold open WAISTBAND BACK panels so the wrong sides are touching.
2. Iron the seam.
3. Topstitch on the waistband side.

STEP 17



1. Repeat steps 14-16 for the WAISTBAND FRONT panel.

STEP 18





1. Grab FRONT POCKET panel.
2. Roll top edge .25 inch over and another .25 inches. Hiding the raw edge.
3. Iron folded edge.
4. Stitch folded edge.

STEP 19



Let's Chat!

1. Fold the bottom edges over one time and iron.

2. Fold the side edges over one time and iron.
3. Place FRONT POCKET panel on FRONT CHEST panel.
4. Using the guides on the front chest panel. Line up the pocket with the marked guides.
5. Pin front pocket panel in position.
6. Stitch into place leaving the top edge open.

STEP 20



1. Flip FRONT CHEST panel to the wrong side.
2. Cut interfacing to the size of the top edge as marked on pattern.
3. Iron interfacing to top edge of front chest panel.
4. Fold curved side edges over twice hiding the raw edge.
5. Iron the folded edges.
6. Sew curved edges.

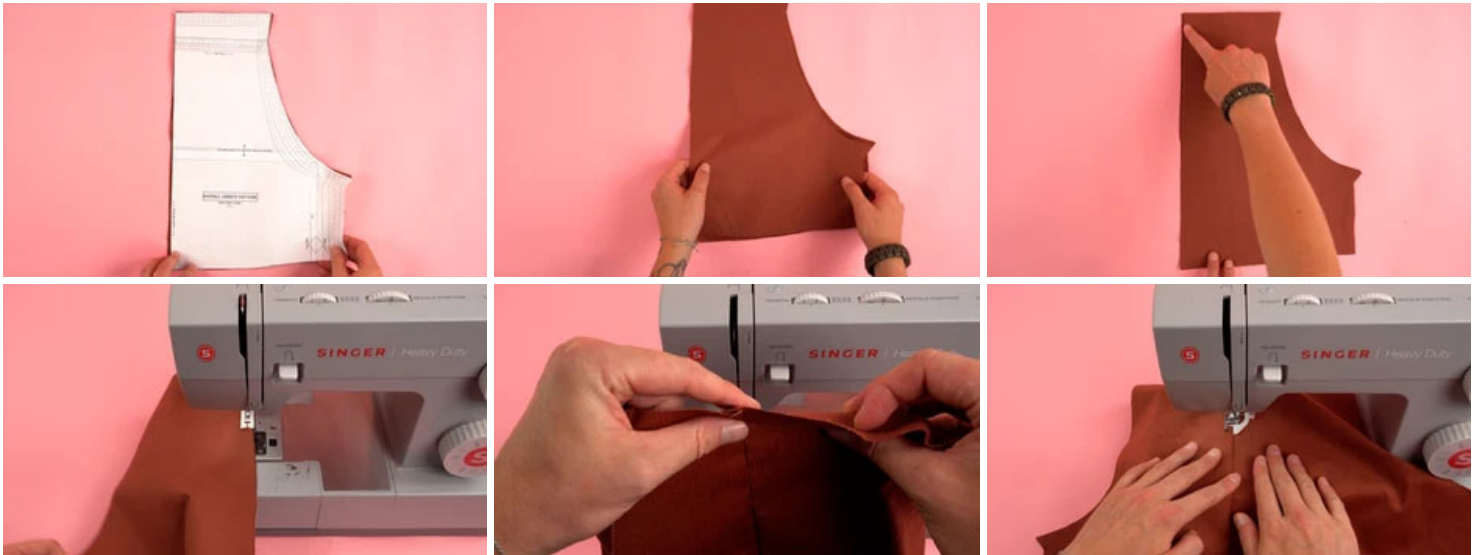
STEP 21



Let's Chat!

1. Fold top edge over twice hiding raw edge.
2. Sew along top edge.

STEP 22



1. Grab both BACK CHEST panels.
2. Place the right sides together.
3. Stitch at .25 inches along straight inside edge.
4. After sewing. Fold seam allowance the left or right and add topstitch.

STEP 23



1. Repeat steps 20 and 21 for BACK CHEST panel.

Let's Chat!

STEP 24



1. Grab **BACK PANT** panel and **BACK CHEST panel**.
2. Place right sides together. Lining up the center of the waistband and back chest panel.
3. Only stitch the outside interfaced waistband to the back chest panel.

STEP 25



Let's Chat!



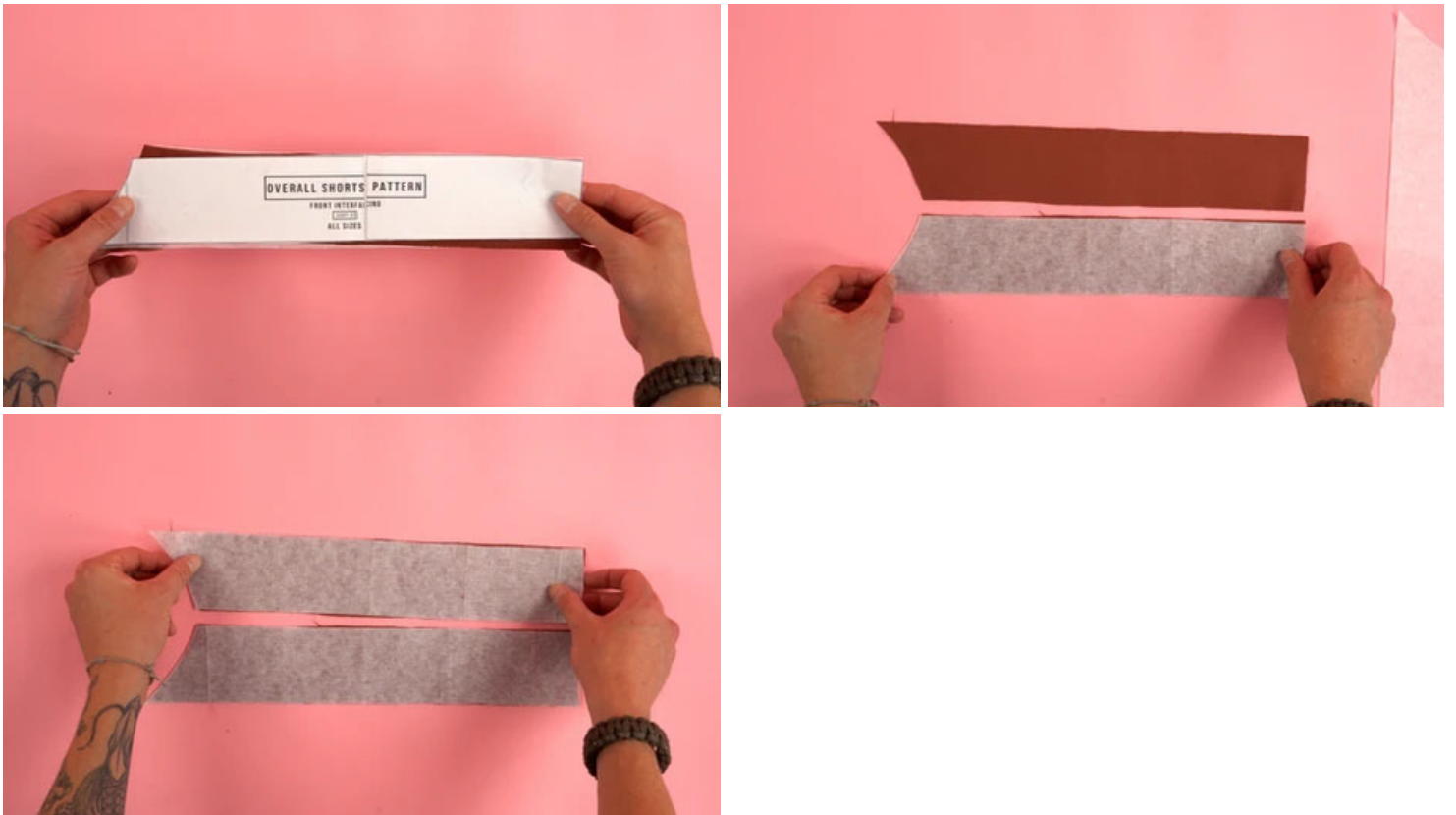
1. On the wrong side of the back panel.
2. Roll the top edge of the waistband back panel over.
3. Iron edge down.
4. Topstitch from the right side sewing both inside and outside waistband back panels.

STEP 26



1. Repeat steps 24 and 25 for with the FRONT CHEST panel and FRONT PANT panel.

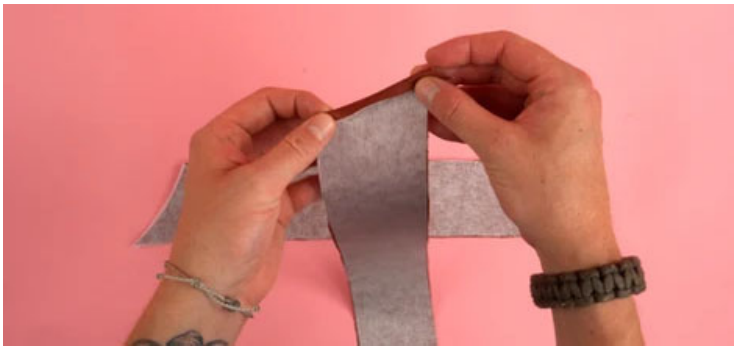
STEP 27



1. Grab FRONT INTERFACING panel.
2. Place interfacing on the wrong side of panels.
3. Iron interfacing to panels.

STEP 28

Let's Chat!

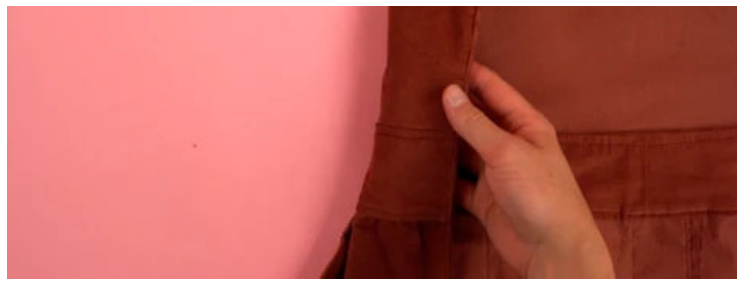


1. Roll top curved edge of front interfacing panel.
2. Line up front interfacing panel with complete front chest/pant panel.
3. Sew at .25 inch seam allowance.
4. Repeat process for opposite side.

STEP 29



Let's Chat!



1. Roll FRONT INTERFACING panels towards the back.
2. With the wrong sides touching. Iron the edges.
3. Topstitch along the top curved and side edge.
4. Repeat process for opposite side.

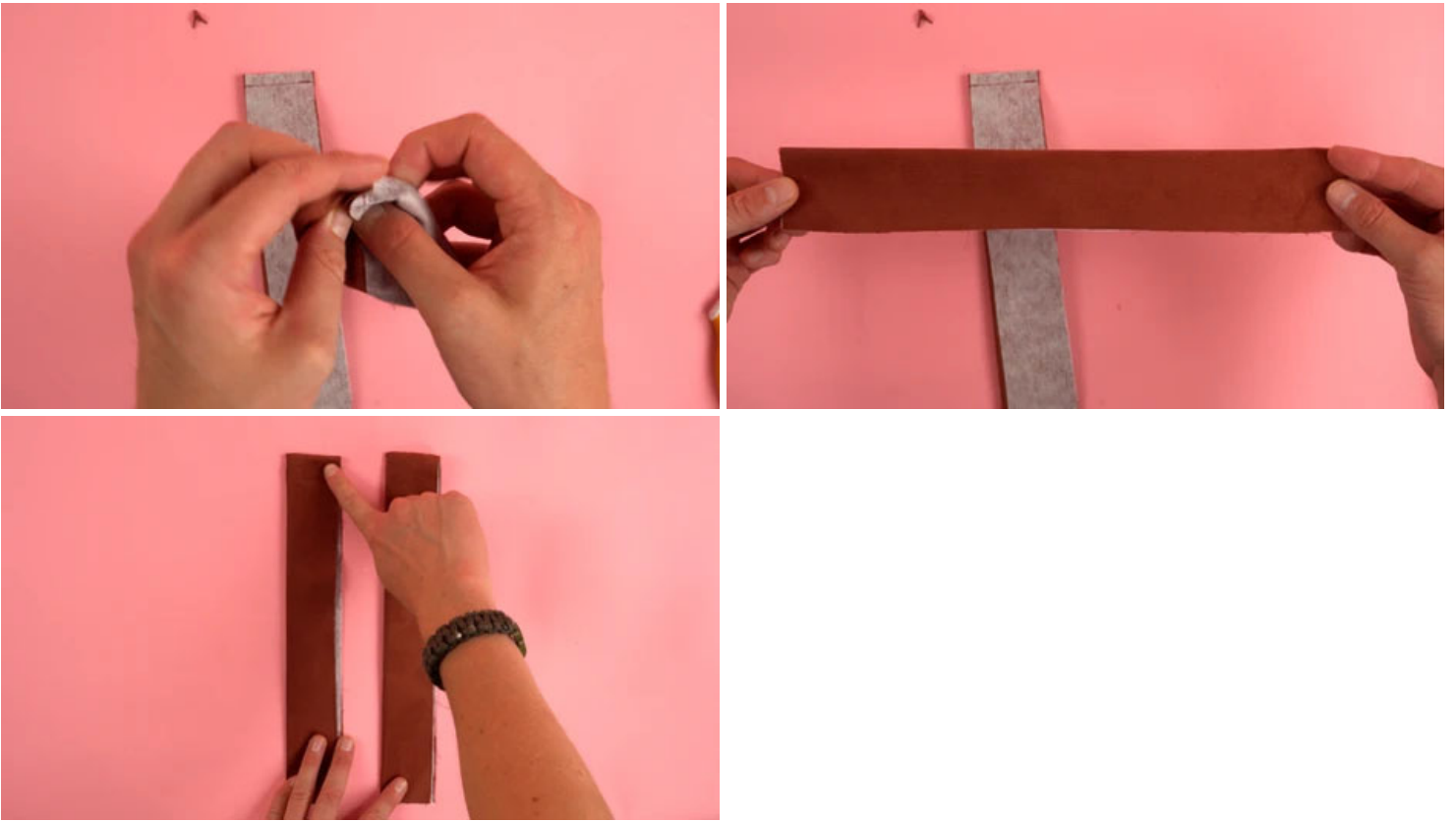
STEP 30



1. Grab UNDER panel.
2. Place interfacing on half of under panel.
3. Fold under panel in half (hot dog style) with right sides touching.
4. Sew top edge at .25 inch seam allowance.
5. Clip the inside corner of seam allowance.

Let's Chat!

STEP 31



1. Flip the under panels right side out.
2. Iron the fold.

STEP 32



Let's Chat!



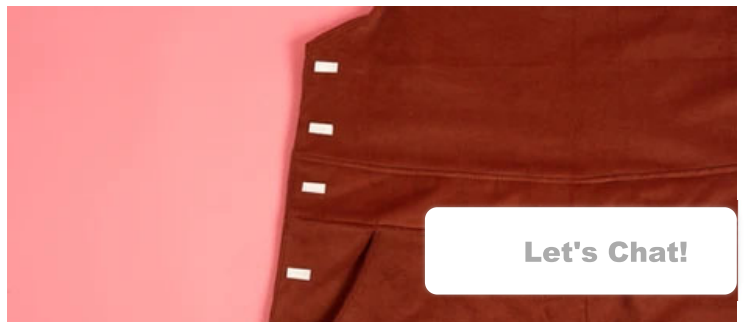
1. Grab complete BACK CHEST and BACK PANT panel.
2. Place the under panel right sides together with the raw edges pointed towards the outside.
3. Sew at .25 inch seam allowance.
4. Repeat process for opposite side.

STEP 33



1. Fold the under panel towards the back.
2. Iron and stitch along the outside edge.

STEP 34

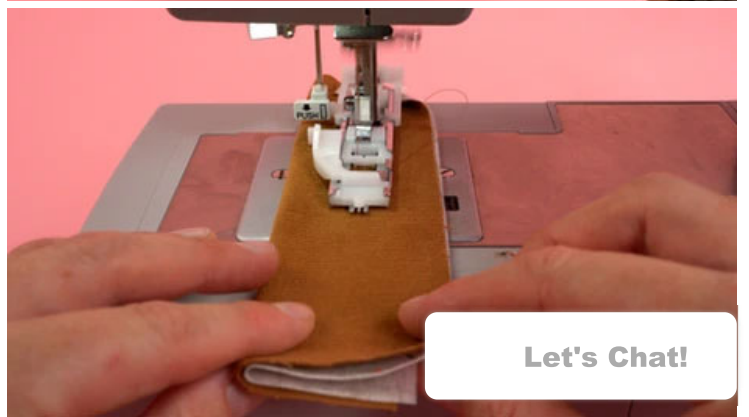
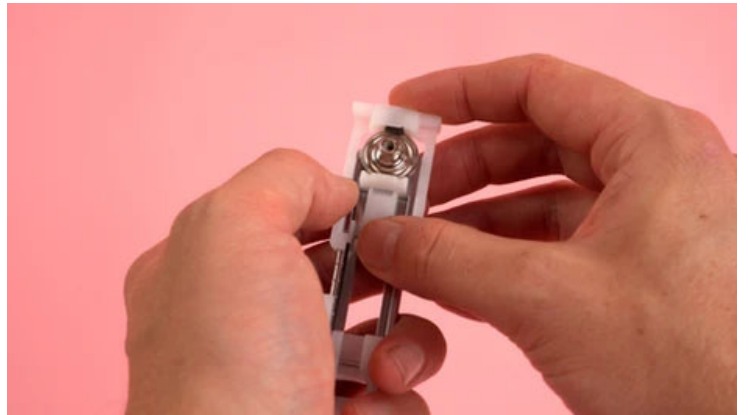
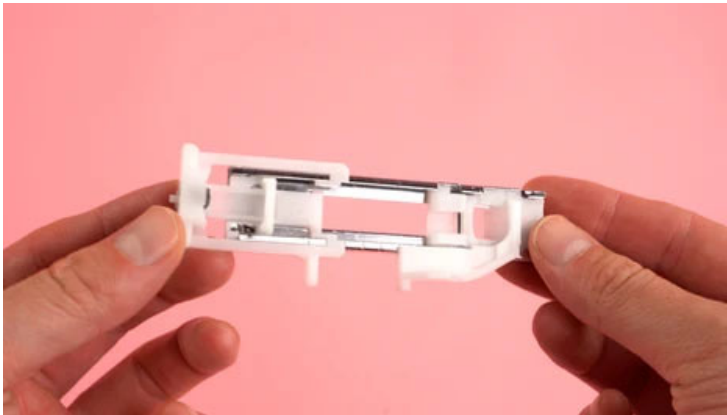


Let's Chat!

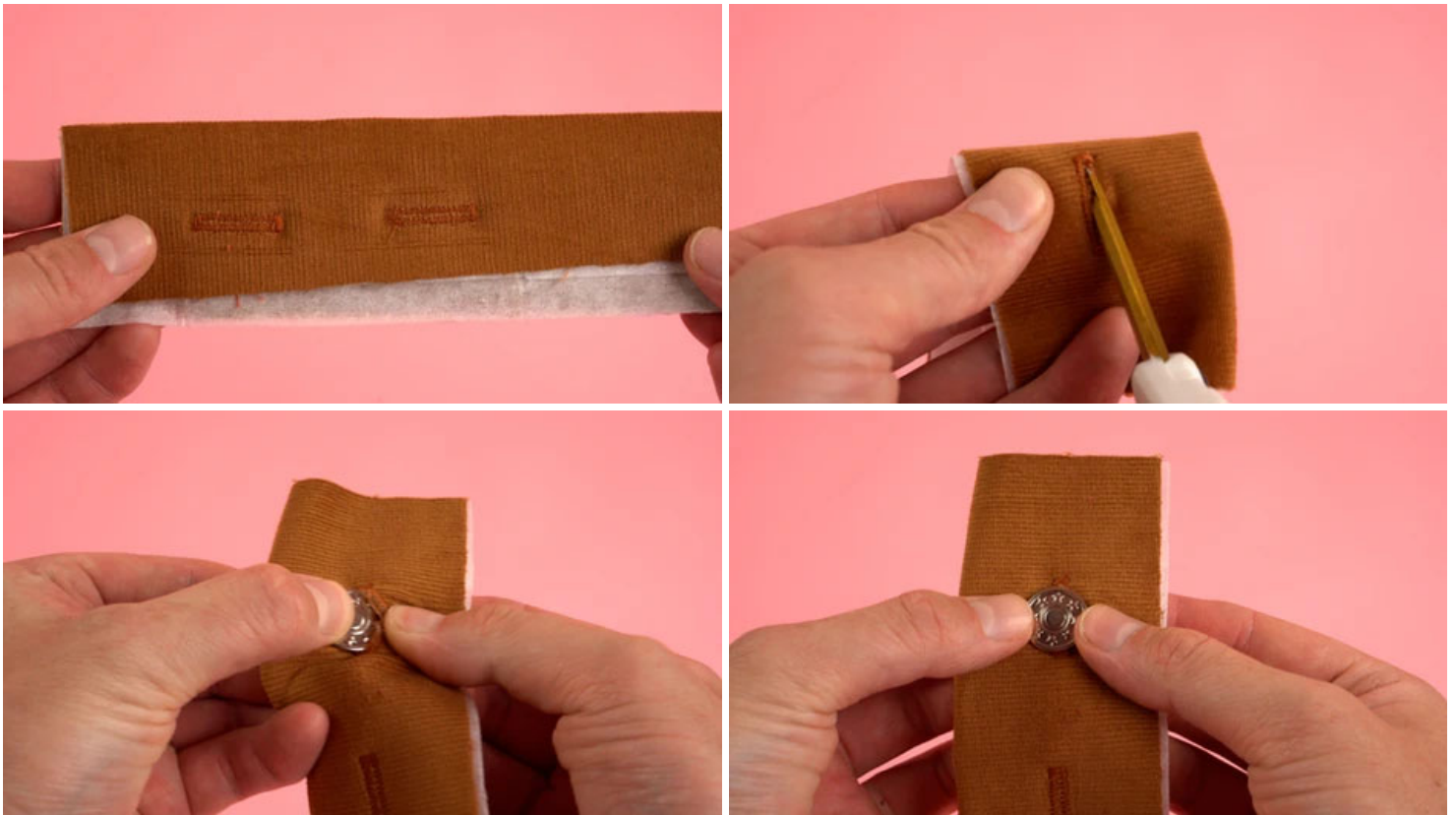


1. Cut small paper strips the size of your button diameter.
2. Space out strips on complete FRONT CHEST and FRONT PANT panel assembly.
3. Mark with chalk.

STEP 35



Let's Chat!



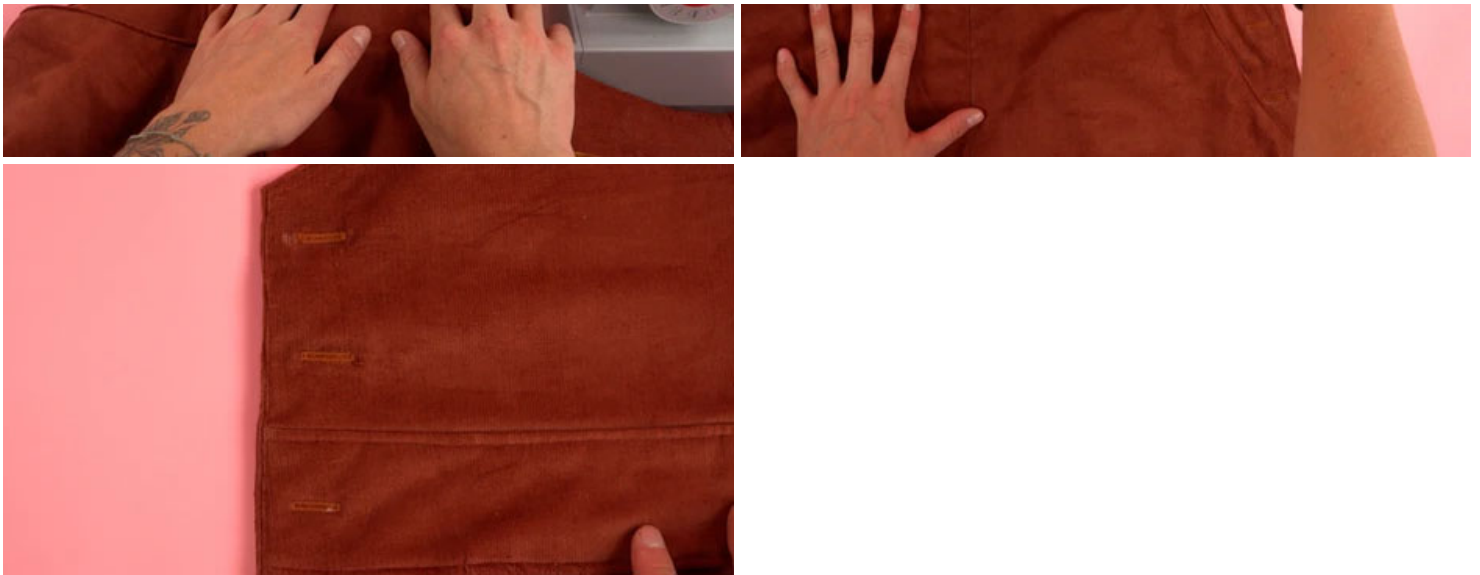
1. Using a buttonhole presser foot on a domestic sewing machine simplifies the process of creating buttonholes. Here's how to use one:
 - a. **Attach the Buttonhole Foot:** Remove the current presser foot from your sewing machine and attach the buttonhole foot. This is typically done by clipping the foot onto the shank. Ensure it is securely in place.
 - b. **Mark the Fabric:** Before sewing, mark the position and length of your buttonhole on the fabric. This usually involves marking the start and end points of the buttonhole, ensuring it is big enough for your button to fit through comfortably.
 - c. **Position the Fabric:** Place the fabric under the presser foot, aligning the start mark with the needle's position. The buttonhole foot will have a guide that should be parallel to the buttonhole's length direction.
 - d. **Set the Sewing Machine:** Select the buttonhole stitch on your sewing machine. Many machines have a one-step or four-step buttonhole setting. If your machine has a one-step function, it will create the buttonhole automatically based on the size of the button you set in the foot. For a four-step buttonhole, you will need to go through each step manually, following your machine's instructions.
 - e. **Start Sewing:** Lower the presser foot and start sewing. If your machine has a one-step buttonhole function, it will stitch the entire buttonhole automatically. For four-step buttonholes, follow your machine's manual to sew each side and bar tack separately. Keep the fabric steady and let the machine pull it through; do not push or pull the fabric.
 - f. **End the Buttonhole:** Once the machine completes the buttonhole, raise the needle and presser foot, and cut the thread. If your machine requires manual steps, complete all steps to finish the buttonhole.
 - g. **Cut the Buttonhole Open:** Use a seam ripper or small scissors to carefully cut open the buttonhole. Insert a pin at one end of the buttonhole to prevent accidentally cutting beyond the end stitches.

Remember, the specifics can vary based on your sewing machine model, so refer to your machine's manual for detailed instructions tailored to your equipment. Practicing on scrap fabric before working on your actual project is always a good idea to ensure perfect results.
2. Always test button hole stitch on scrap fabric. Make sure the button can fit through the button hole and not slip out easily.

STEP 36



Let's Chat!



1. Once satisfied with button hole settings.
2. Add button holes to the marked areas on the FRONT CHEST and FRONT PANT panel assembly.

STEP 37



1. Grab the front and back completed panels.
2. Place the right sides together.
3. Line up the bottom outside edges.
4. Sew at .25 inch seam allowance.
5. ONLY sew the bottom edge up to the pocket.

STEP 38



Let's Chat!



1. Roll the inside seam allowance to the left or right.
2. Topstitch the out side seams.

STEP 39



1. Grab the front and back inside seams.
2. Place the right sides together.
3. Sew at .25 inch seam allowance.

Let's Chat!

STEP 40



1. Roll seam allowance to the left or right.
2. Topstitch inside seam.

STEP 41

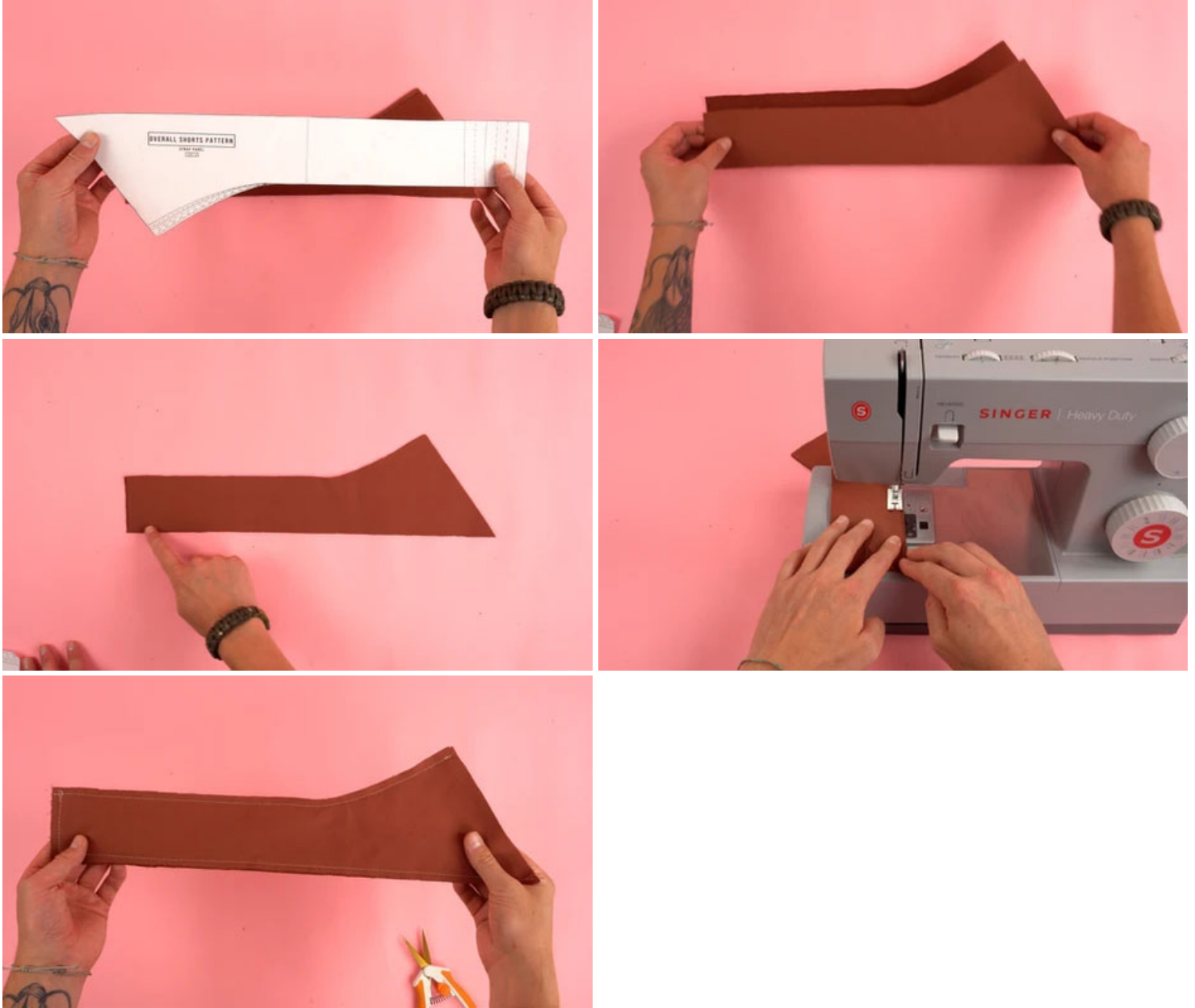


1. Roll the bottom leg openings over twice towards the inside. Hiding the raw edge.
2. Pin the edge down.

Let's Chat!

3. Sew all the way around the folded edge.

STEP 42



1. Grab STRAP panels.
2. Place the right sides together.
3. Sew around the outside at .25 inch seam allowance leaving the bottom edge open.

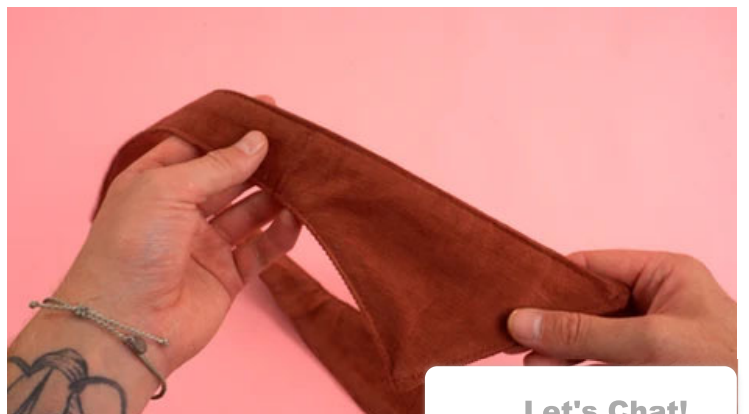
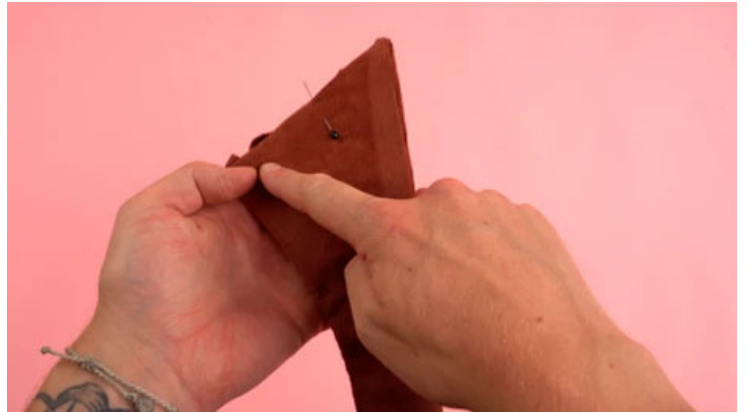
STEP 43





1. Clip the corners of the top edge.
2. Pull the right side out.
3. Iron the strap panel.

STEP 44

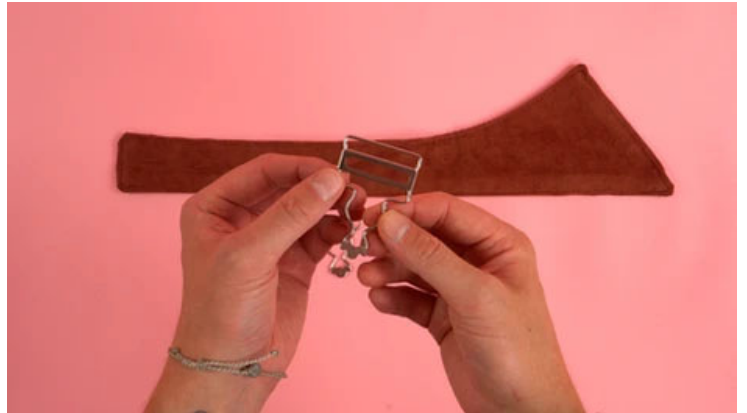


Let's Chat!



1. Fold the bottom edges in towards each other.
2. Pin down so no raw edges are exposed.
3. Topstitch along the entire outside edge.

STEP 45



1. Strap buckles come in a few different styles.
2. Choose the buckle that best suits your style.

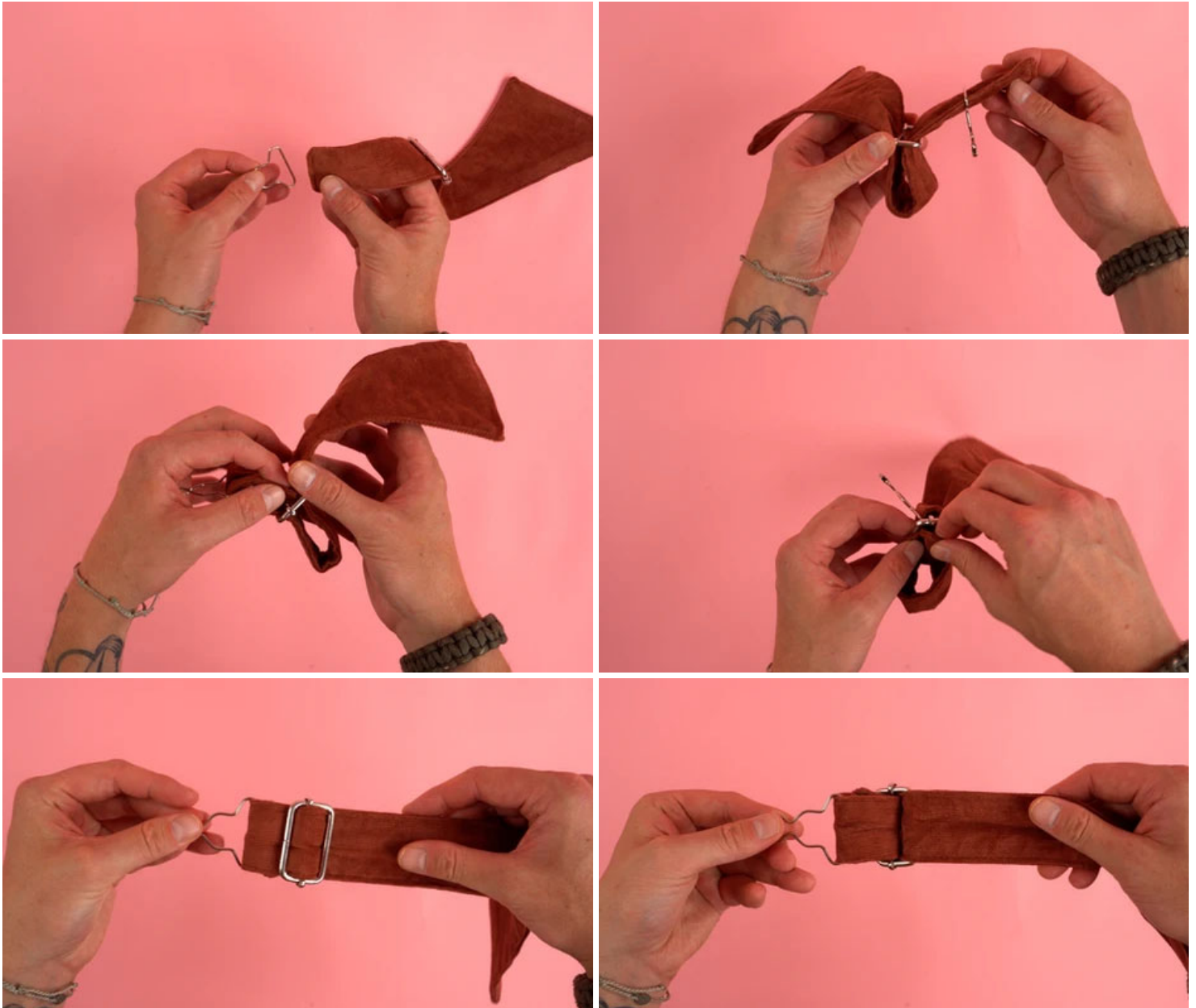
STEP 46



Let's Chat!

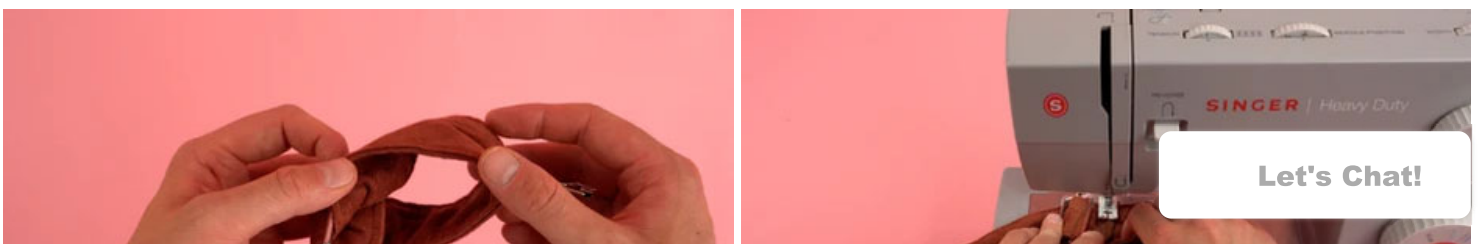
1. Start by threading the top of the strap through the strap adjuster from bottom to top and back through the towards the bottom.

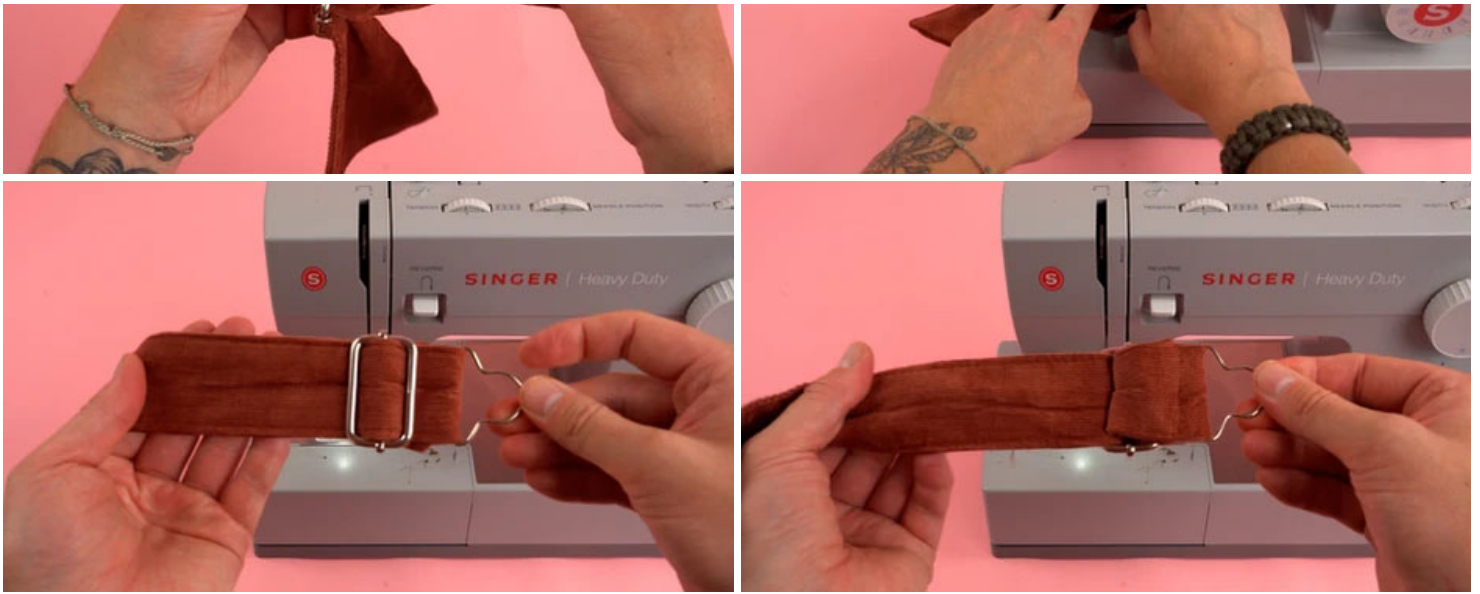
STEP 47



1. Feed strap buckle on strap.
2. Wrap top of strap back towards strap adjuster.
3. Feed strap back through the strap adjuster back opening from the bottom side.
4. Pull strap end through back opening.

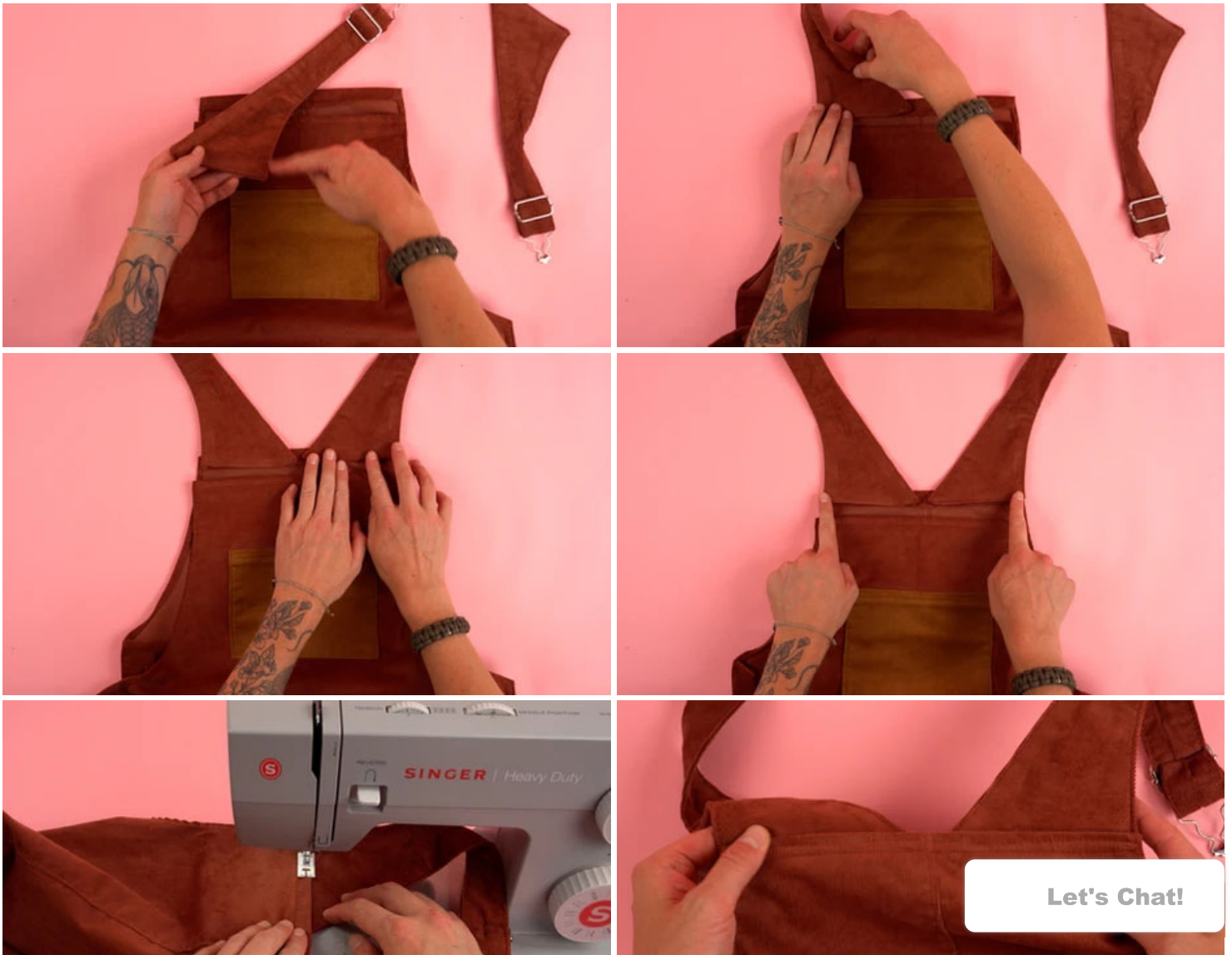
STEP 48





1. Feed slack through strap adjuster. Allowing space to sew down strap end.
2. Roll the strap end back down onto itself.
3. Sew strap end down.
4. Repeat process for opposite strap.

STEP 49

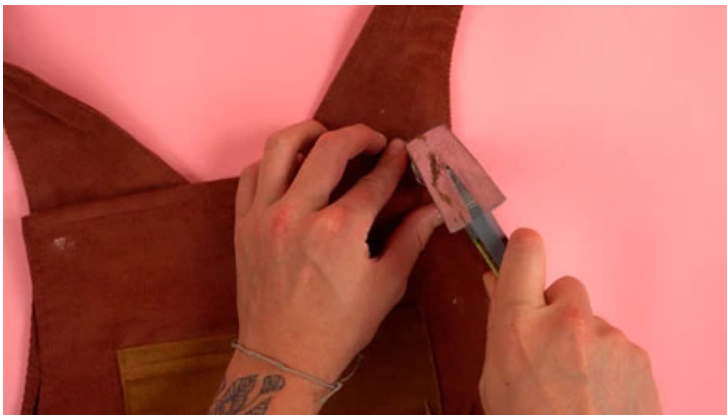
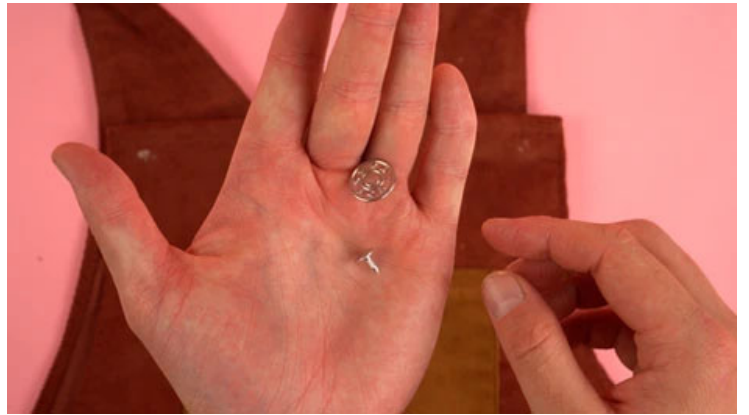


Let's Chat!



1. Place straps on the inside of the complete back chest panel.
2. Line the curve of the strap up with the outside edge.
3. Sew the straps down.

STEP 50



1. Line up straps with the outside edges of front chest panel.
2. Mark the inside buckles with chalk.
3. Poke hole through the front chest panel.
4. Feed male end of jean button through hole.
5. Add female end of jean button.
6. Depending on the style of jean button either apply presser or screw into secure tight position.
7. Repeat process for opposite strap.

STEP 51

Let's Chat!





1. Using the same buttons for the sides. Line up the button holes on the top of the under panel.
2. Mark through the button holes with chalk.
3. Add jean buttons on chalk marks.

FINISHED





The final step is adding your custom branding. Adding a branded leather patch to your overalls is a fantastic way to customize and elevate the final product. By incorporating your brand, you not only enhance the aesthetic appeal but also infuse a sense of identity and uniqueness into the design. Here's how the process works, especially with the use of double-sided rivets, to secure the branded leather effectively:

1. **Branded Leather Creation:** The first step involves creating a leather patch that carries your brand's logo or name. This can be achieved through various methods such as stamping, burning, laser engraving, or embossing, depending on the desired effect and the resources available. The key is to ensure clarity and durability of the branding on the leather, as this will be a prominent feature of the overalls.
2. **Positioning:** Once the branded leather patch is ready, the next step is to decide on its placement on the overalls. The location is crucial as it affects visibility and aesthetics. Common spots include the front center, where it's most visible, or on a discreet side for a more understated approach. The goal is to choose a spot that complements the design of the fanny pack and enhances its overall look.
3. **Using Double-Sided Rivets:** Double-sided rivets are chosen for their strength and ability to securely fasten the leather patch without damaging the materials. To attach the patch, small holes are made in the corners of the leather patch and corresponding spots on the overalls. The double-sided rivets are then inserted through these holes from the underside of the fanny pack fabric, through the leather patch, and capped on the top side. A rivet setter tool is used to clamp down the rivets, ensuring a tight and secure attachment.

Adding a branded leather patch with double-sided rivets to a overalls not only personalizes the item but also significantly boosts its value, making it a unique piece that stands out. This customization is a testament to craftsmanship and attention to detail, reflecting the maker's pride and the brand's identity. It transforms the overalls from a mere accessory into a statement piece, enhancing its appeal to customers looking for something special and personal.

Thank you! for taking the time to explore our fanny pack sewing project! It's been a pleasure to share this creative journey with you, and I sincerely hope you enjoyed the process of making your very own overalls. Crafting something with your own hands is a rewarding experience, and using your creativity to produce a beautiful, finished product is truly special. I hope that your fanny pack not only turned out great but also reflects your unique style and creativity. Thank you again for joining in on this sewing adventure. May your new overalls accompany you on many exciting outings, filled with pride in your craftsmanship and the joy of creation.