

# EAR FLAP PATTERN



## PRINT INSTRUCTIONS

- SCAN QR CODE ABOVE TO SEE PICTURE OF FINISHED PATTERN.
- PRINT THE PATTERN AT 100% SCALE OR "ACTUAL SIZE"
- PATTERNS ARE DESIGNED TO PRINT ON STANDARD HOUSEHOLD PRINTERS; (US) 8.5 INCHES BY 11 INCHES OR A4 297 MILLIMETERS BY 210 MILLIMETERS.

## SUPPLY LIST

(SCAN QR CODES ON PAGE 2 FOR SUPPLIES)

### STYLE: 1

**MAIN FABRIC:** CANVAS, FLANNEL, WOOL FABRIC - .25 YARDS

**SECONDARY FABRIC:** LIGHTWEIGHT FABRIC - .25 YARDS

**DRAWSTRING:** ANY STYLE - 10-20 INCH

**EYELETS:** ANY SIZE - 2

### STYLE: 2

**MAIN FABRIC:** FLANNEL, WOOL FABRIC - .25 YARDS

**SECONDARY FABRIC:** LIGHTWEIGHT FLEECE FABRIC - .25 YARDS

**DRAWSTRING:** ANY STYLE - 10-20 INCH

| SEAM ALLOWANCE: .25 INCH |

## VIDEO INSTRUCTIONS

OPEN CAMERA APP AND POINT AT THE QR CODE

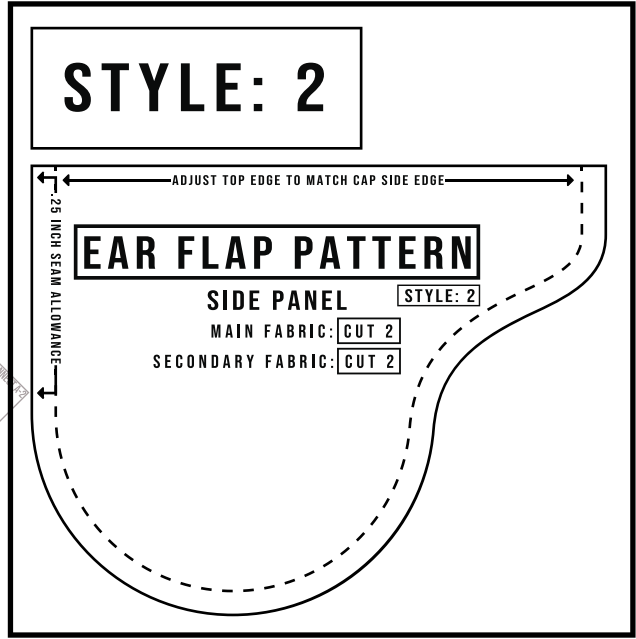
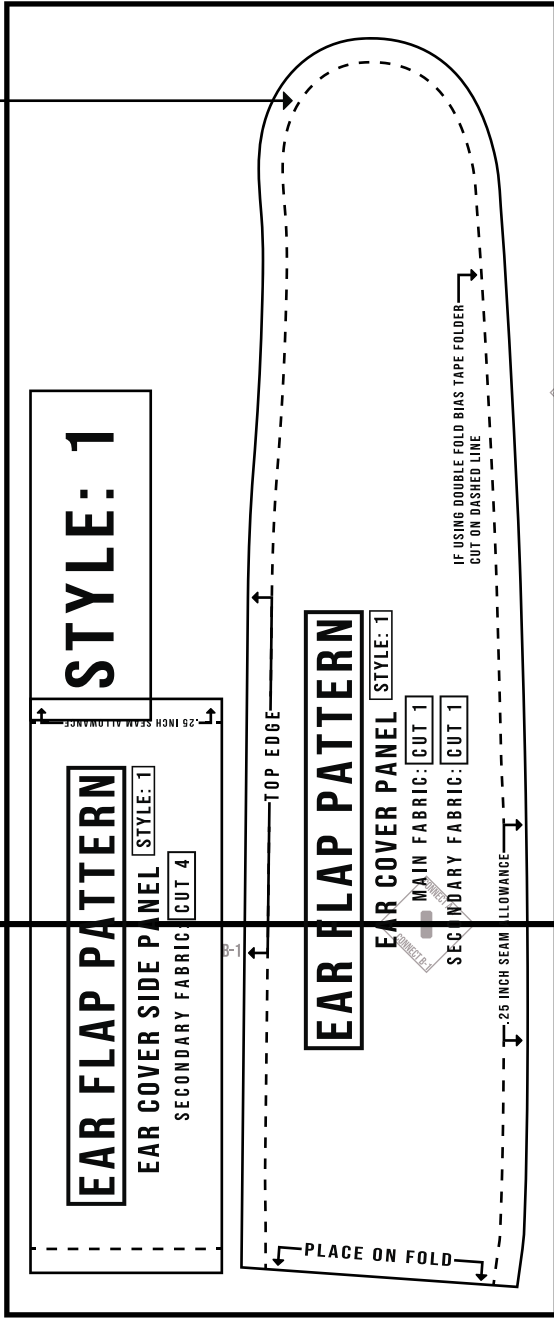


LINK WILL BRING YOU TO INSTRUCTIONS

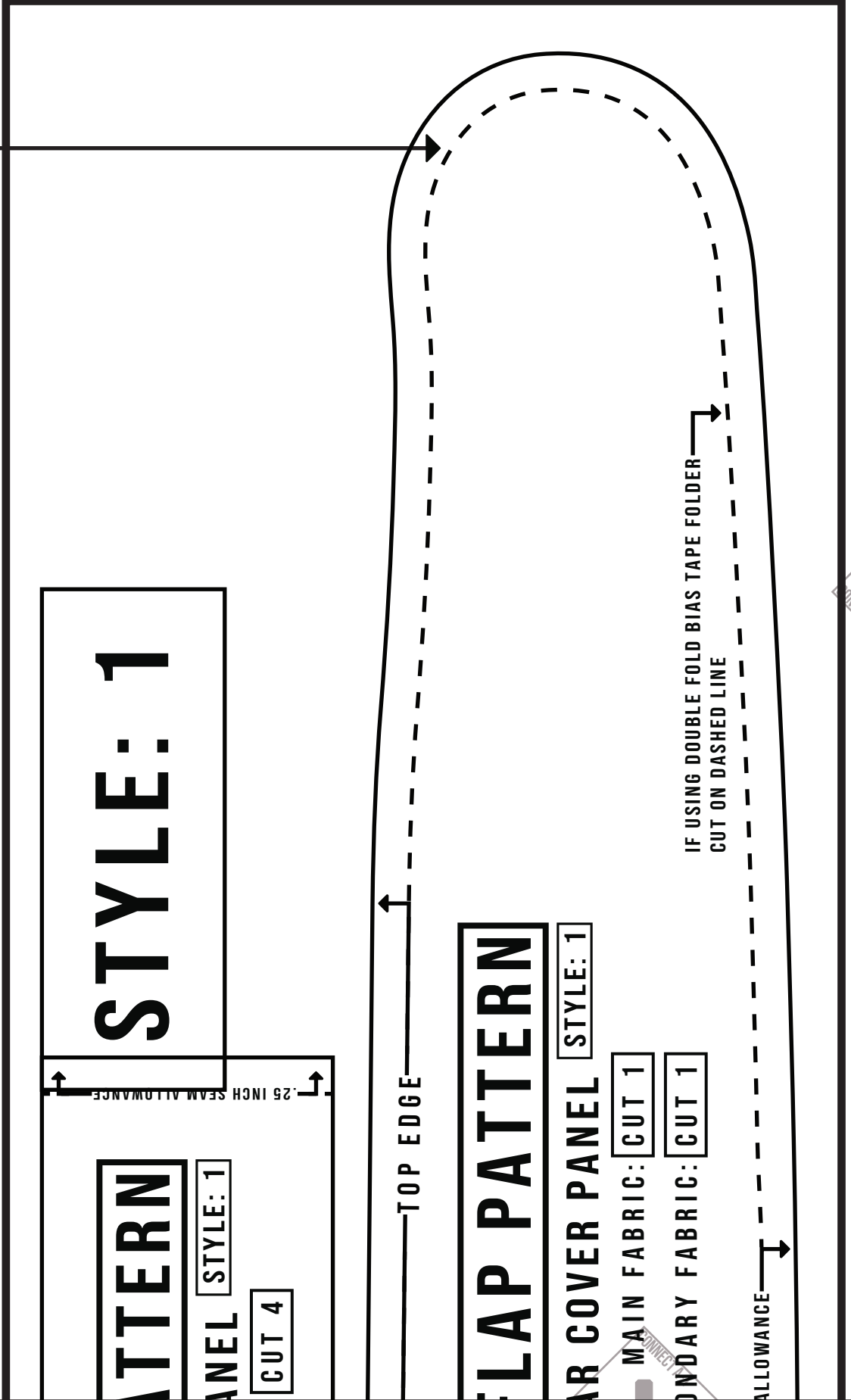
URL LINK: [HTTPS://YOUTU.BE/XJGSHXPXV20](https://youtu.be/XJGSHXPXV20)

PATTERN LAYOUT GUIDE: LINE UP SQUARES AND FOLLOW THE ALPHANUMERIC LABELS TO COMPLETE PATTERN.

**\*\* CUT ON DASHED LINE IF USING DOUBLE FOLD BIAS TAPE FOLDER \*\***



# DOUBLE FOLD BIAS TAPE FOLDER\*\*



**STYLE: 1**

**PATTERN**

**PANEL STYLE: 1**

**CUT 4**

0.25 INCH SEAM ALLOWANCE

**TOP EDGE**

**FLAP PATTERN**

**STYLE: 1**

**FRONT COVER PANEL**

**MAIN FABRIC: CUT 1**

**SECONDARY FABRIC: CUT 1**

**IF USING DOUBLE FOLD BIAS TAPE FOLDER  
CUT ON DASHED LINE**

**ALLOWANCE**

CONNECT A-1

# STYLE: 2

## EAR FLAP PATTERN

SIDE PANEL

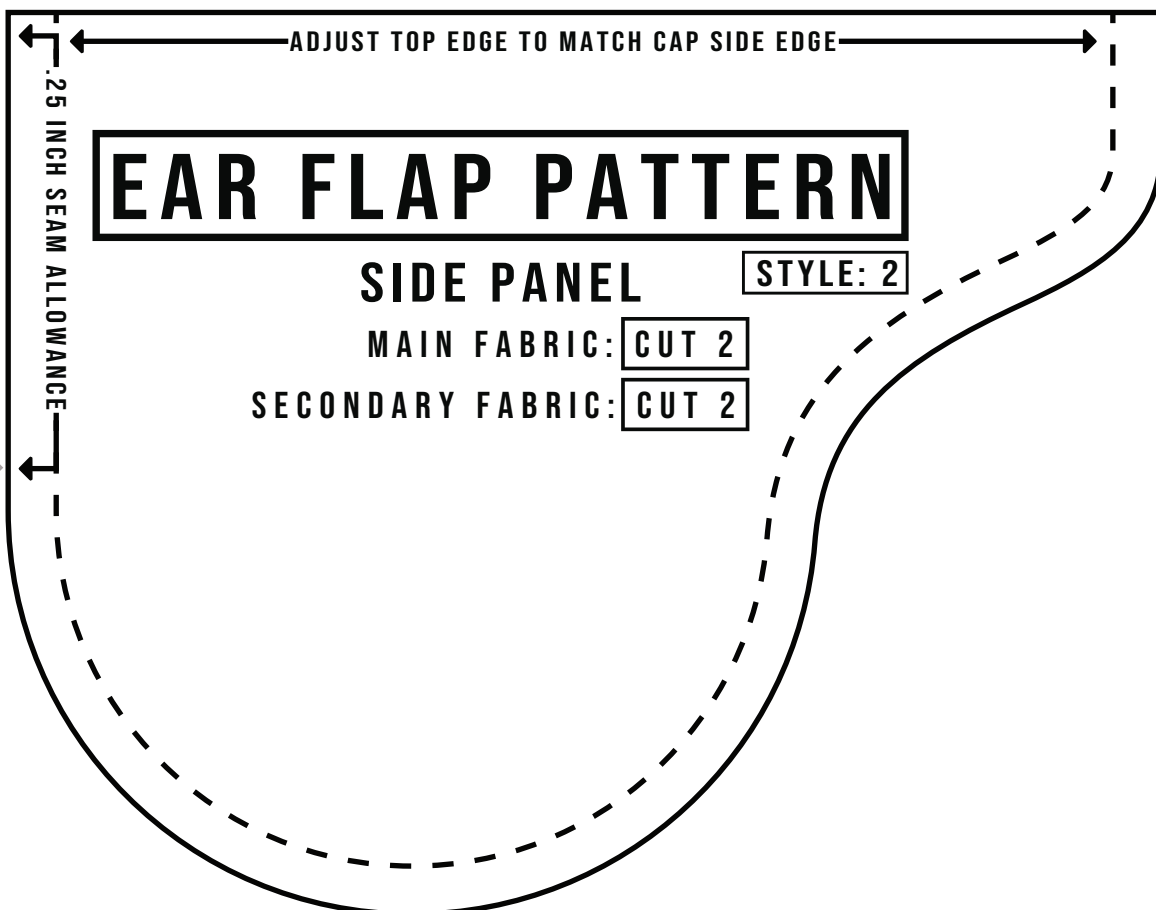
STYLE: 2

MAIN FABRIC: CUT 2

SECONDARY FABRIC: CUT 2

ADJUST TOP EDGE TO MATCH CAP SIDE EDGE

.25 INCH SEAM ALLOWANCE



CORNER A-2

**\*\*CUT ON DASHED LINE IF USING DOUBLED**

**EAR FLAP PA**

**EAR COVER SIDE PA**

**SECONDARY FABRIC:**

B-1

**EAR F**

**EA**

**CONNECT B-1**

**SECO**

**.25 INCH SEAM**

**PLACE ON FOLD**

