

# Pet Hoodie Instructions

## Model: P001



PICTURE OF FINISHED PROJECT

### SUPPLY CHECKLIST

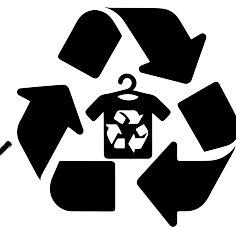
- MAIN FABRIC:** .5 - 1.25 yards (sweatshirt fleece, fleece, sherpa)
- RIB KNIT FABRIC:** .25 yards (any style)
- CORD:** 1 yard (any style)
- CORD STOPPER:** 2 (any style)
- EYELETS:** 2 (any style)
- SNAP BUTTON:** 1 (optional)(any style button will work. It will be used to secure the hood to down.)



LINK TO STEP BY STEP VIDEO INSTRUCTIONS

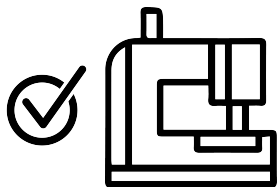
All supplies can be changed and switched to your liking. Get creative and have fun picking out custom materials.

- Recycling/repurposing old clothing and furniture into fabric not only gives these items a second life but also significantly contributes to reducing waste and promoting sustainable living.
- List of a few common items: Upholstery Fabric, Curtains and Draperies, Bed Linens and Towels, Sweaters, Denim (jeans and jackets), Sweater, Quilts, Tote bags, Cleaning rags, T-Shirts. Any type of fabric can be utilized and recycled.



### RECOMMENDED SEWING MACHINES

\*THESE ARE JUST RECOMMENDED MACHINES. YOU CAN USE ANY MACHINE TO MAKE ALL PROJECTS. THE MACHINE WILL HELP GIVE YOUR SEWING PROJECT A PROFESSIONAL FINISH\*

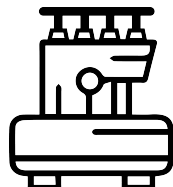


#### DOMESTIC SEWING MACHINE

- This machine creates stitches by interlocking a top thread, threaded through the needle, with a bottom thread from the bobbin below the fabric, forming secure stitches in the material.
- Used to lock seams together with exposed raw edge.

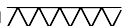
STRAIGHT STITCH - - - - -

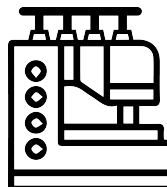
ZIG-ZAG STITCH ~~~~~



#### SERGER (OPTIONAL)

- This machine creates stitches by using multiple threads to encase the fabric edges, simultaneously trimming excess seam allowance, for a neat, professional, and stretch-resistant finish.
- Used to lock seams together with clean edge.

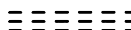
SERGE STITCH 

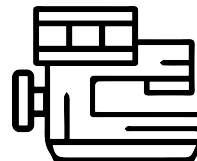


#### COVERSTITCH MACHINE (OPTIONAL)

- This machine creates professional-looking hems and seams by using two or more needles to form parallel rows of stitches on the top and a looper to interlock the thread on the bottom, providing stretchability and a clean finish to garments.
- Used for top stitching stretch knit fabrics.

COVERSTITCH STITCH  BOTTOM SIDE

 TOP SIDE



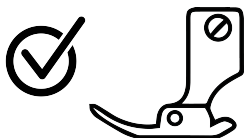
#### INDUSTRIAL SEWING MACHINE (OPTIONAL)

- This machine creates strong, precise stitches at high speeds, using a specialized mechanism suited for heavy-duty materials and designed for efficiency and durability in commercial manufacturing environments.
- Used for locking most seams together at a faster speed. This machine is only needed in bulk productions.

INDUSTRIAL STITCH - - - - -

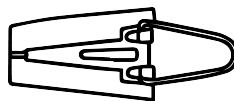
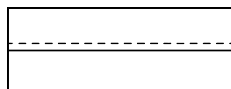
### ATTACHMENTS, BINDERS, PRESSER FEET

\*THESE ARE RECOMMENDED TOOL TO ATTACH OR RUN ON YOUR MACHINES. YOU CAN USE THESE ON ALMOST ALL OF YOUR SEWING PROJECTS. THEY WILL HELP GIVE YOUR SEWING PROJECT A PROFESSIONAL FINISH\*



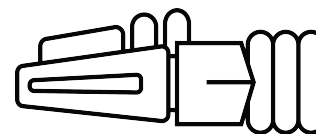
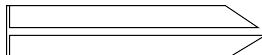
#### EDGE PRESSER FOOT

- An edge presser foot helps in sewing straight seams at precise distances from the fabric edge, making it easier to achieve uniform hems, topstitching, and decorative edges.
- Not needed but great to have around for professional finish.



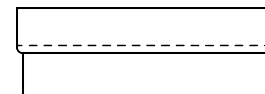
#### BIAS TAPE BINDER

- A bias tape binder folds bias tape before you feed it into the sewing machine, allowing for clean and uniform binding of fabric edges in one step.
- Great way to go if you are making the project on a budget.

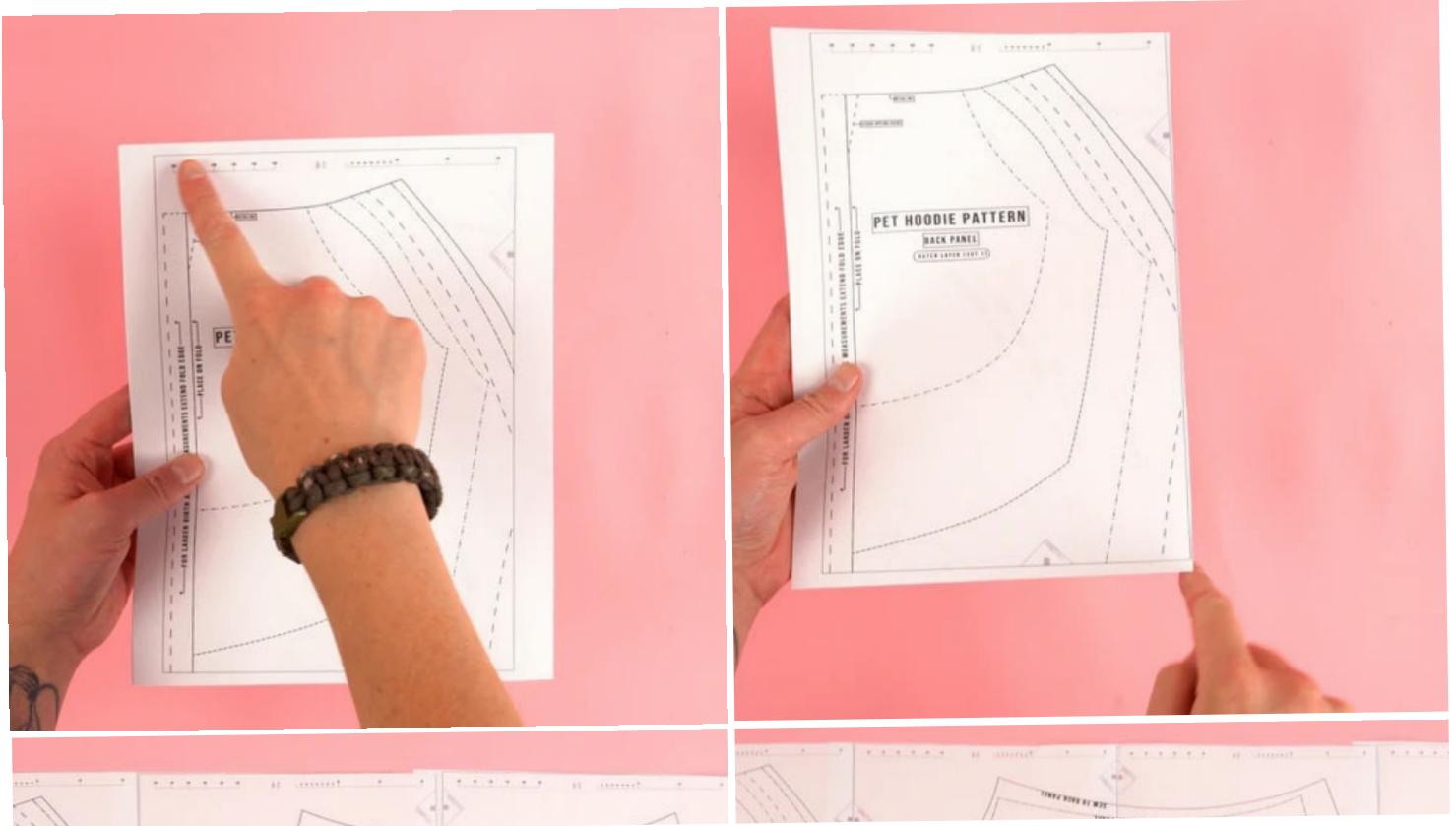


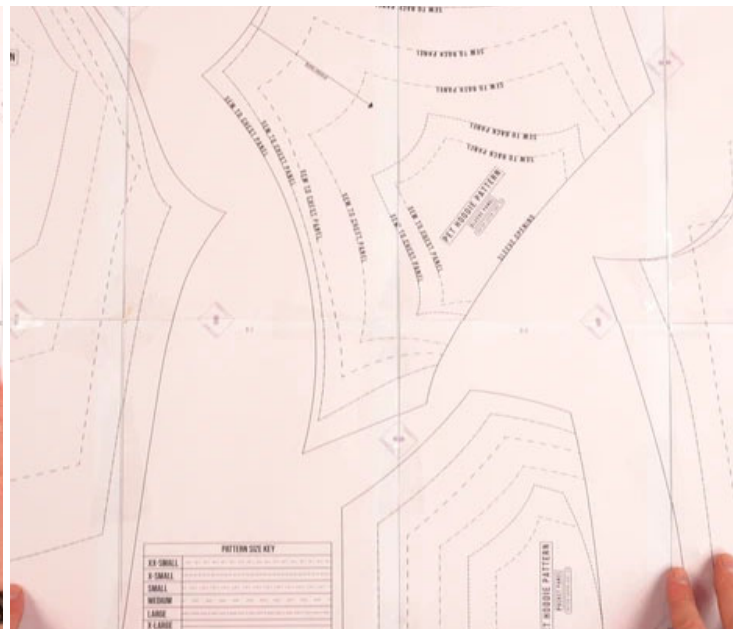
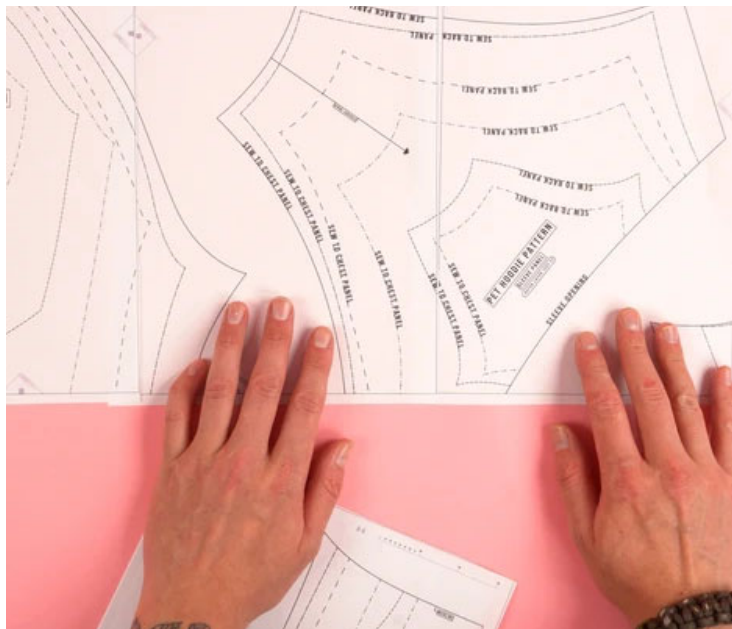
#### BIAS BINDER TAPE ATTACHMENT

- A bias tape binder attachment folds and feeds bias tape into the sewing machine as you sew, allowing for clean and uniform binding of fabric edges in one step.
- Mainly used on industrial sewing machine. Speeds up the project by attaching and sewing at the same time.



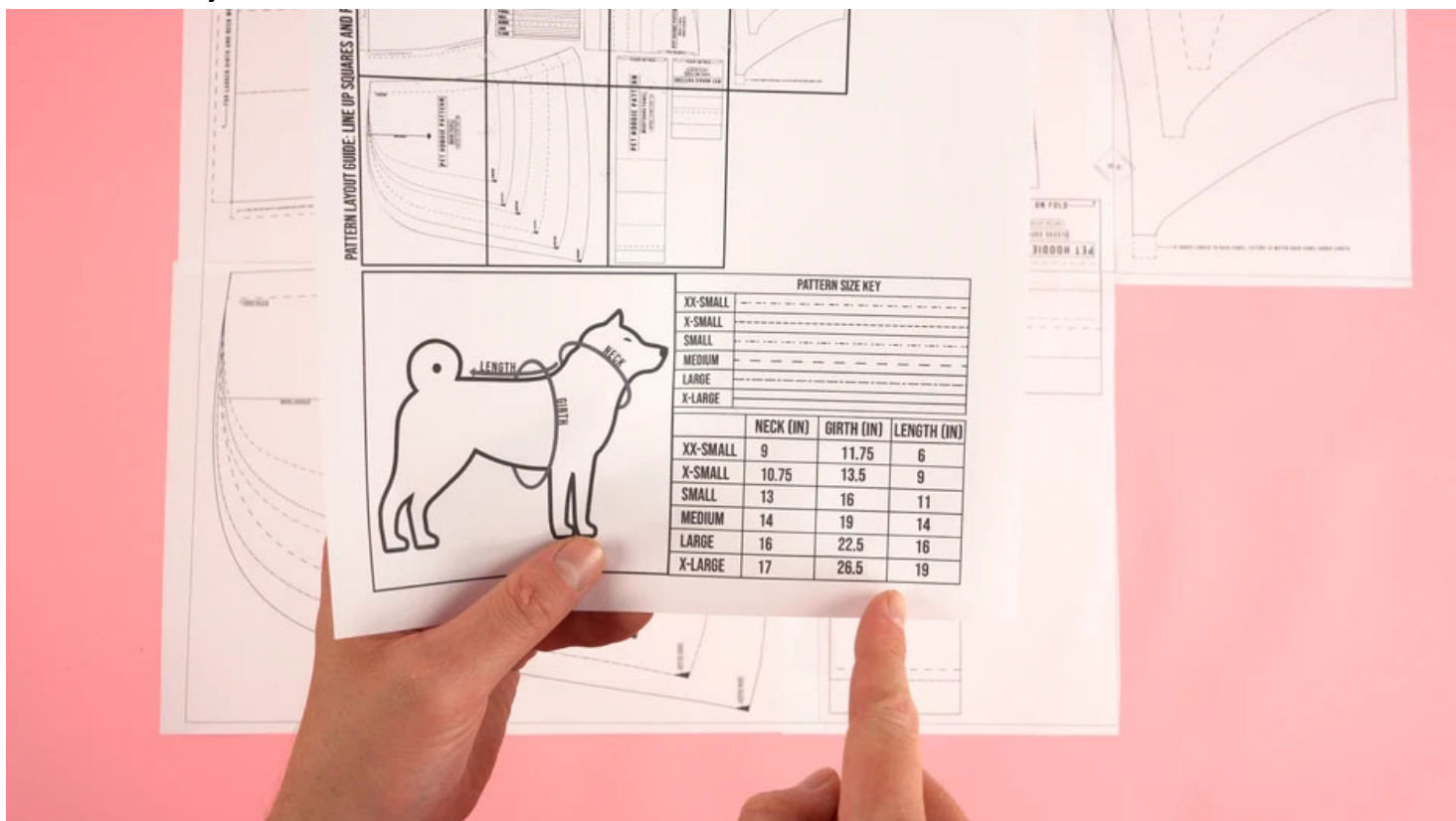
CLICK IMAGE TO ENLARGE





1. When printing your sewing pattern, it's crucial to ensure that the pattern is printed at 100% scale or "actual size" in the print settings. This step is important to maintain the integrity of the design and ensure that the dimensions are accurate for your project. Not adjusting the print settings accordingly can result in a pattern that is either too small or too large, leading to potential issues with the fit and final outcome of your sewing project.
2. Trim the top and one of the side edges up to the margin box. This will make it help when line up the pages for a perfectly aligned pattern.
3. Layout the pattern lining up the diamonds and pages in alphanumeric.
4. Tape pages together.
5. Cut on the outside of the black line.

## How to Measure you Pet and Choose the Correct Size



**NOTE:** This pattern is based off 3 measurements NECK, GIRTH, and LENGTH. These measurements can fit at size pet. We will be going over what size to choose and how to adjust the size to fit correctly. Keep in mind pets do not go off of

[Let's Chat!](#)



standard sizes and the sizes found and the store are just for large scale manufacturing purposes. It is best to use the information below to adjust the size for your pets exact measurements. It will fit way better than anything found in store. The last key thing to note is that the neck and stomach strap overlap. This helps dial in sizing for a better fit. We will go over this in future steps.



#### How to Measure Pets NECK

1. Use a soft, flexible measuring tape or a piece of string.
2. Position the tape or string around the pets neck, where a collar would usually sit (between the base of the skull and the top of the shoulders).
3. Ensure the tape/string is snug but not tight; you should be able to fit two fingers underneath.
4. Record the measurement where the tape or string meets itself. If using string, measure it against a ruler to find the neck size. Add 1-2 inches so the end product is not too tight.



# GIRTH MEASUREMENT

## How to Measure Pets GIRTH

1. Use a soft, flexible measuring tape or a piece of string.
2. Locate the widest part of your pets chest, typically right behind the front legs.
3. Ensure the tape/string is snug but not tight; you should be able to fit two fingers underneath.
4. Record the measurement where the tape or string meets itself. If using string, measure it against a ruler to find the neck size. Add 1-2 inches so the end product is not to tight.



## How to Measure Pets LENGTH

1. Use a soft, flexible measuring tape or a piece of string.
2. Locate the base your pets neck. From the base of the neck measure straight back along the back to the center point of the hind legs.
3. Record the measurement where the tape or string lands. If using string, measure it against a ruler to find the neck size. Add or subtract from the over length for a custom fit.

## How to Adjust Pattern







### How to Adjust the Pattern to Exact Measurements

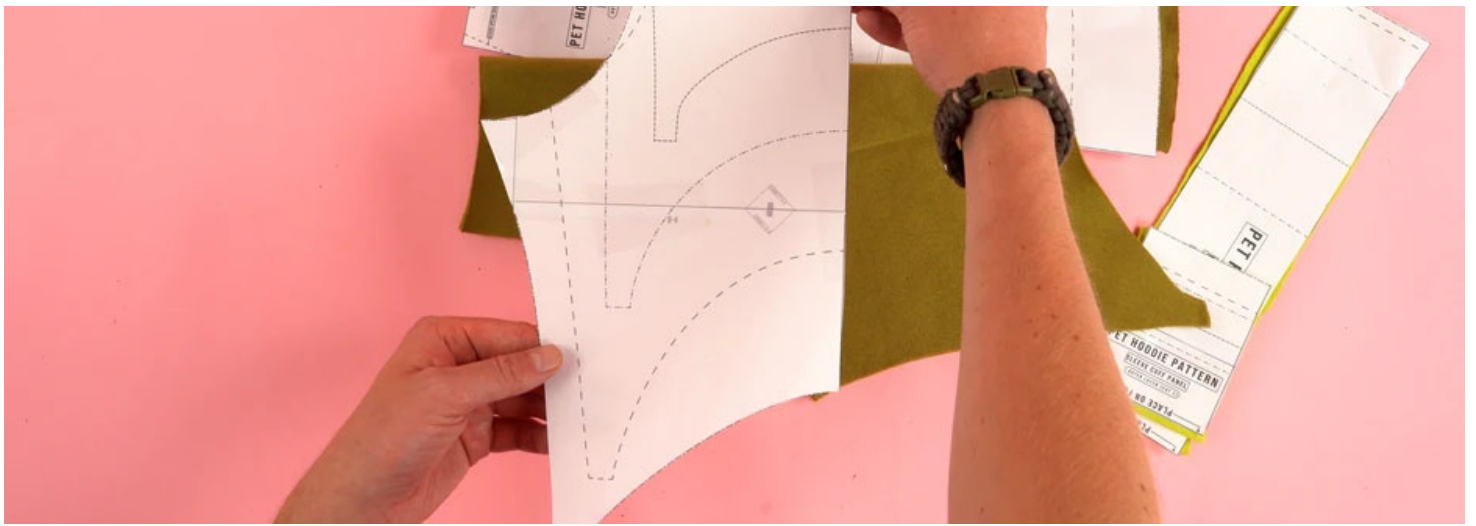
The BACK PANEL can be adjusted to any measurements. After picking the best size for your pet. The next step is adjusting the BACK PANEL to work with your exact measurements. This panel can be adjusted in 3 areas NECK, GIRTH, and LENGTH. We will be walking through each adjustments to give you the best end product.



### ADJUSTING NECK MEASUREMENTS

The first adjustment on the BACK PANEL is the NECK. This section of the pattern can be extended or shortened to best match your measurements. Keep in mind the front strap overlaps. This will play a factor when adjusting the NECK section. Make sure to make same adjustments to the HOOD PANEL bottom edge.





### ADJUSTING GIRTH MEASUREMENTS

The Second adjustment is GIRTH. When making adjustments to this measurement you will need the BACK PANEL and CHEST PANEL.



### ADJUSTING LENGTH MEASUREMENTS

The third adjustment is LENGTH. When making adjustments to this measurement you will need the BACK PANEL.

Using your pets length measurement. Extend or shorten the top edge of the BACK PANEL to match your pets measurement. When adjusting the top edge be sure to taper the edge back down to match the bottom edge before reaching the CHEST PANEL section of the pattern.

[Let's Chat!](#)

# PATTERN PIECES

CLICK IMAGE TO ENLARGE



Waistband Panel: Cut 1 total. 1: Rib Knit Fabric



Sleeve Cuff Panel: Cut 1 total. 1: Rib Knit Fabric

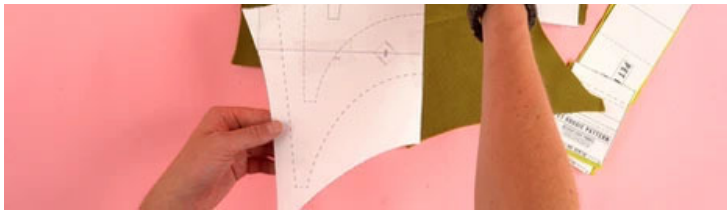


Back Panel: Cut 1 total. 1: Main Fabric

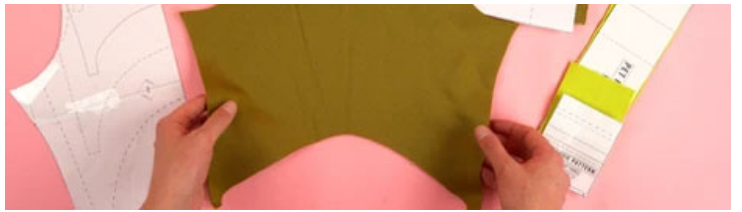


Let's Chat!





Chest Panel: Cut 1 total. 1: Main Fabric



Hood Panel: Cut 4 total. 4: Main Fabric



Pocket Panel: Cut 2 total. 2: Main Fabric



Sleeve Panel: Cut 2 total. 2: Main Fabric

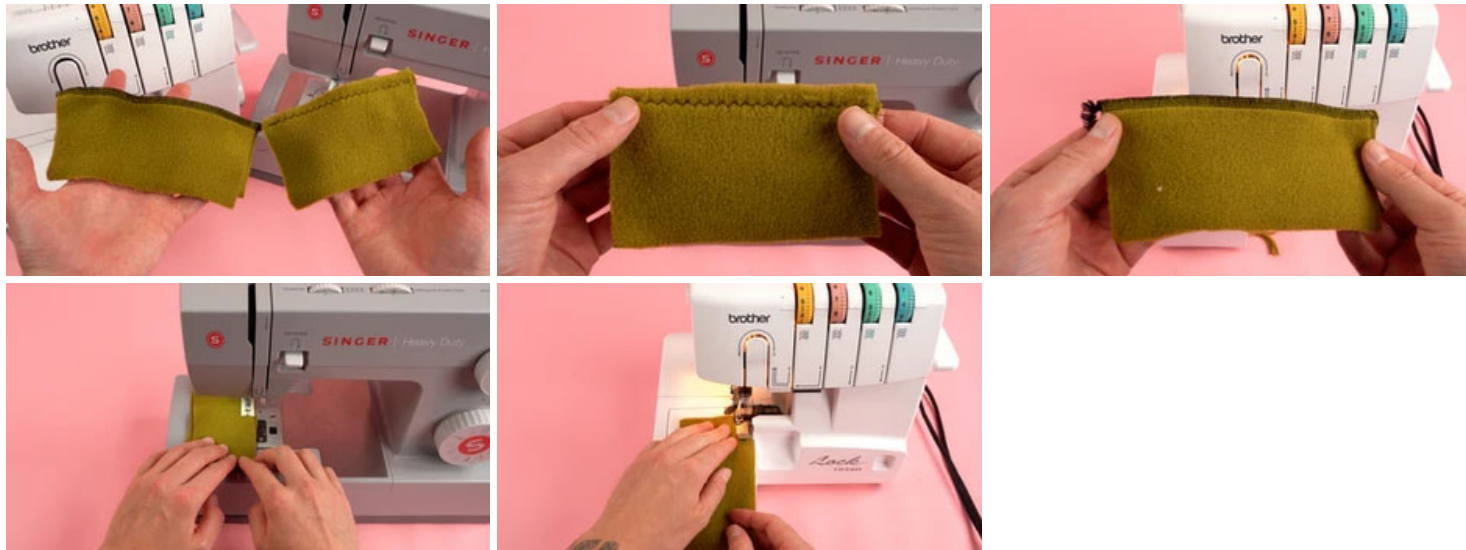


Let's Chat!

# STEP BY STEP ASSEMBLY

## STEP 1

[CLICK IMAGE TO ENLARGE](#)



Before we moving onto the next step I highly recommend looking into a few different sewing methods to improve the outcome of your sewing projects.

The first technique is using a **Serger Sewing Machine**.

A serger machine, also known as an overlocker, is a specialized type of sewing machine designed for edging, hemming, or seaming fabric. It's particularly famous for its use with stretch knit fabrics due to its ability to create clean, finished edges and seams that are strong and stretchy. Sergers differ from traditional sewing machines in several key ways and offer unique advantages, especially for handling stretchy materials.

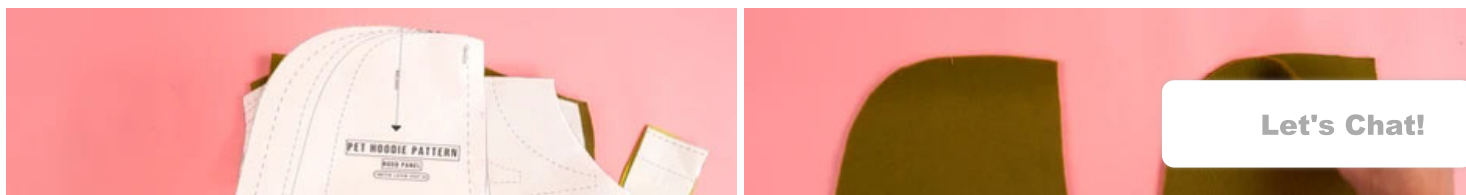
1. **Edge Finishing:** The serger trims and finishes fabric edges in one pass, creating a professional and durable edge that resists fraying and rolling, which is common in knit fabrics.
2. **Elasticity:** The overlock stitch created by a serger is inherently stretchy, making it perfect for constructing stretch knit garments. The seams will stretch with the fabric without breaking or puckering, providing comfort and durability in wear.
3. **Speed:** Sergers are typically faster than traditional sewing machines, allowing for quicker construction of garments and projects, especially beneficial when working with large quantities of fabric or producing multiple garments.
4. **Professional Look:** The finished seams produced by a serger are similar to those found in store-bought garments, giving homemade projects a more professional appearance.
5. **Versatility:** While primarily used for seams, sergers can also create decorative edges, roll hems, and other specialized stitches, adding versatility to your sewing projects.

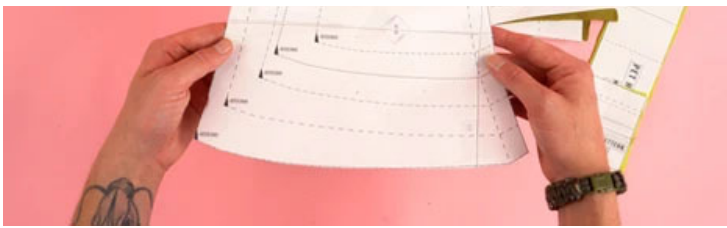
For those working regularly with stretch knit fabrics, a serger is an invaluable tool, significantly enhancing the quality and durability of your projects. While there is a learning curve associated with using a serger, its benefits for sewing stretchy, fraying, and lightweight fabrics are unparalleled once mastered.

The second method is using a **Zig-Zag stitch** on a standard sewing machine.

(information on the zig-zag stitch is above)

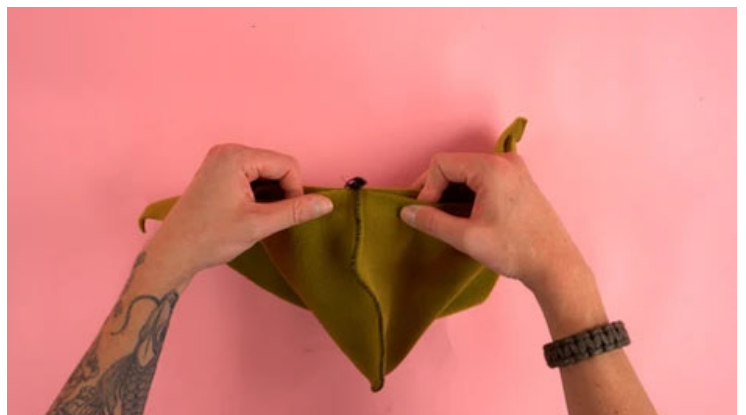
## STEP 2





1. Grab all 4 HOOD PANELS.
2. Place the right sides together.
3. Stitch along the back curved edge.

### STEP 3

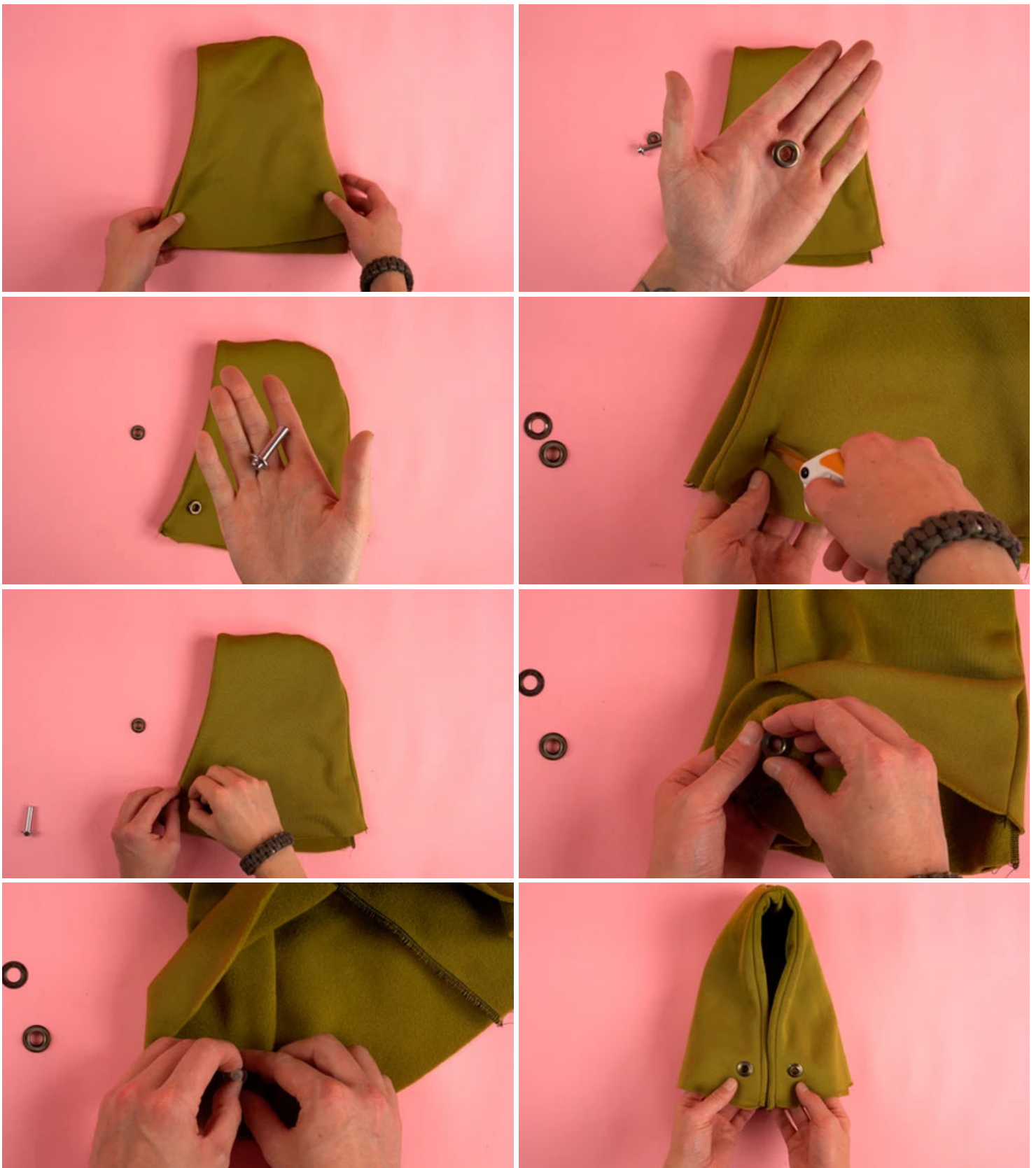


1. Start by flipping one hood section right side out.
2. Place the right side out panel inside the opposite panel with right sides together.
3. Line up the bottom edges and top center seam.
4. Stitch along the entire front edge.

[Let's Chat!](#)

### STEP 4





1. Flip hood right side out.
2. Make a mark about 1 inch from the opening edge and 2.5 inches from the bottom. This will be the placement of the eyelet. Repeat this mark for the opposite side.
3. Snip small hole for eyelet. Only cut hole through the outer layer.
4. Slide eyelet into hole.
5. Place backing on eyelet.
6. Use hand die or press to secure eyelet into position.

**Let's Chat!**

## STEP 5



1. Next we will be adding a path for the cord.
2. Pin the hood together. Lining up the outer and inner panels.
3. Stitch from edge to edge on the outside of the eyelet.
4. Try to keep the stitch the same distance from the edge all the way around. This will give you a more professional finished sweatshirt.

**Pro Tip:** Try using an edge presser foot to make uniform stitches. The edge presser foot specialized attachment designed to help guide fabric for precise and straight stitching, especially along the edges. It typically has a metal guide in the center or side that aligns with the edge of the fabric, ensuring that the stitches are uniformly spaced from the edge throughout the sewing process.

This tool is particularly useful for achieving perfect topstitches, as it allows for even and consistent spacing, giving a neat and professional finish to garments and other sewn items. By keeping the fabric edge running smoothly against the guide, sewers can maintain a straight line, resulting in a polished and tidy stitch appearance.

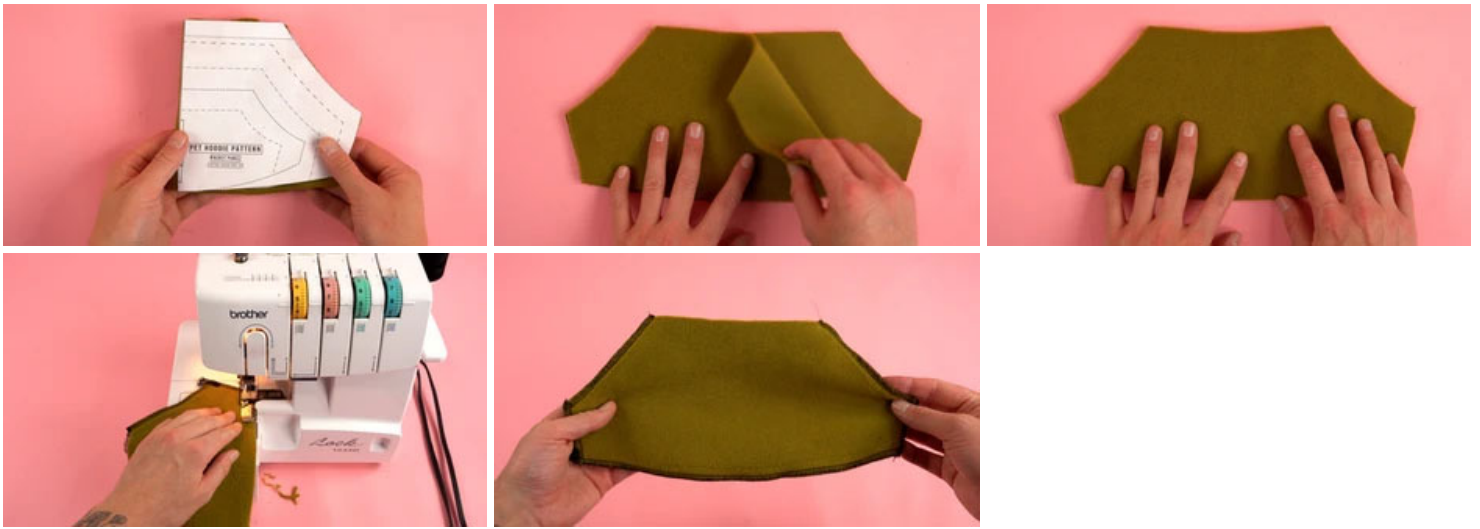
## STEP 6



1. Line up the bottom edges.
2. Stitch the bottom edge. If you are zig zag stitching. Stitch directly on the edge.

## STEP 7

Let's Chat!



1. Grab both POCKET PANELS.
2. Place the right sides together.
3. Stitch all edges except the top.

## STEP 8

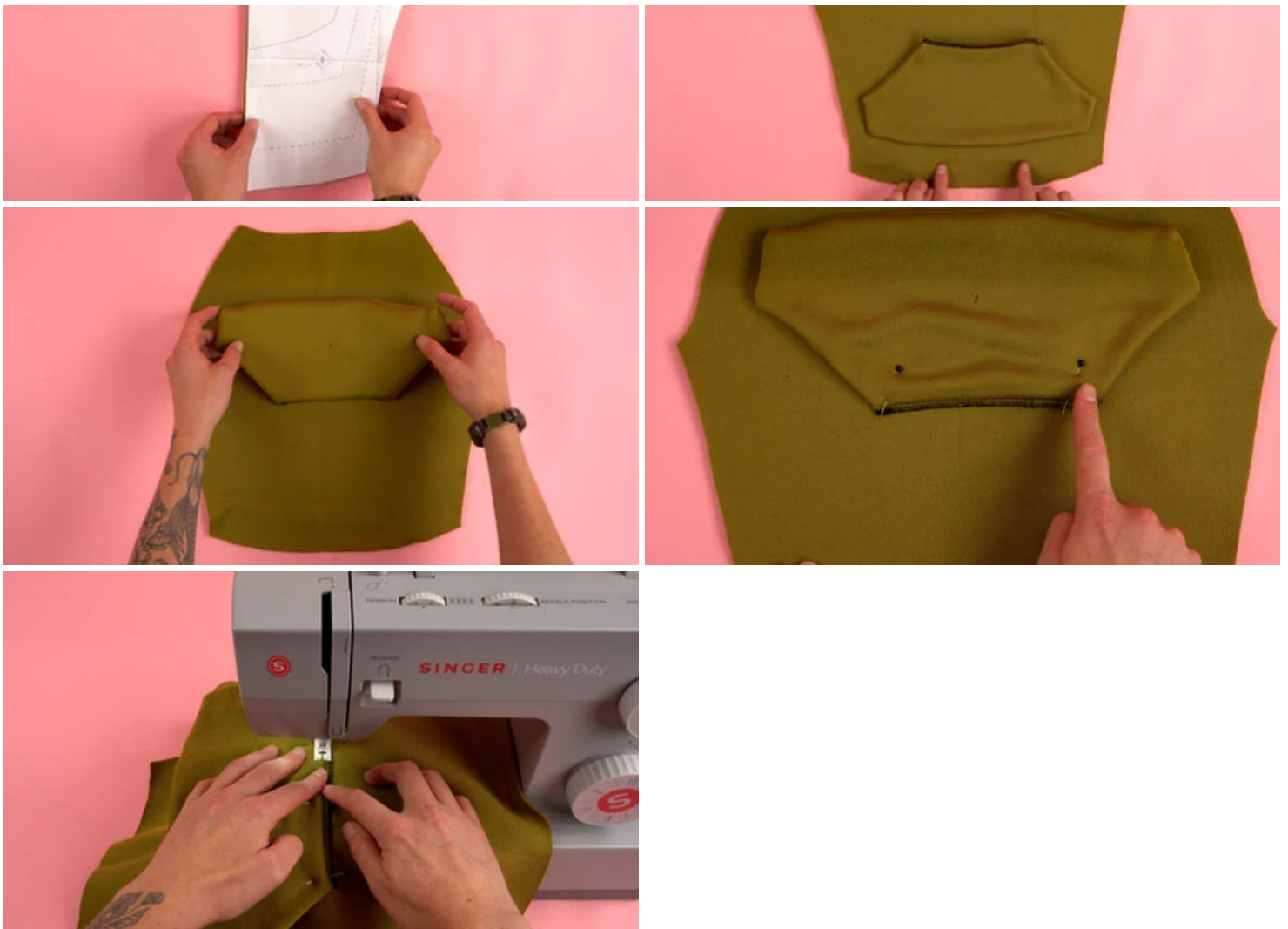


1. Flip the right sides out.
2. Line up the top edge.
3. Stitch along edge.

## STEP 9

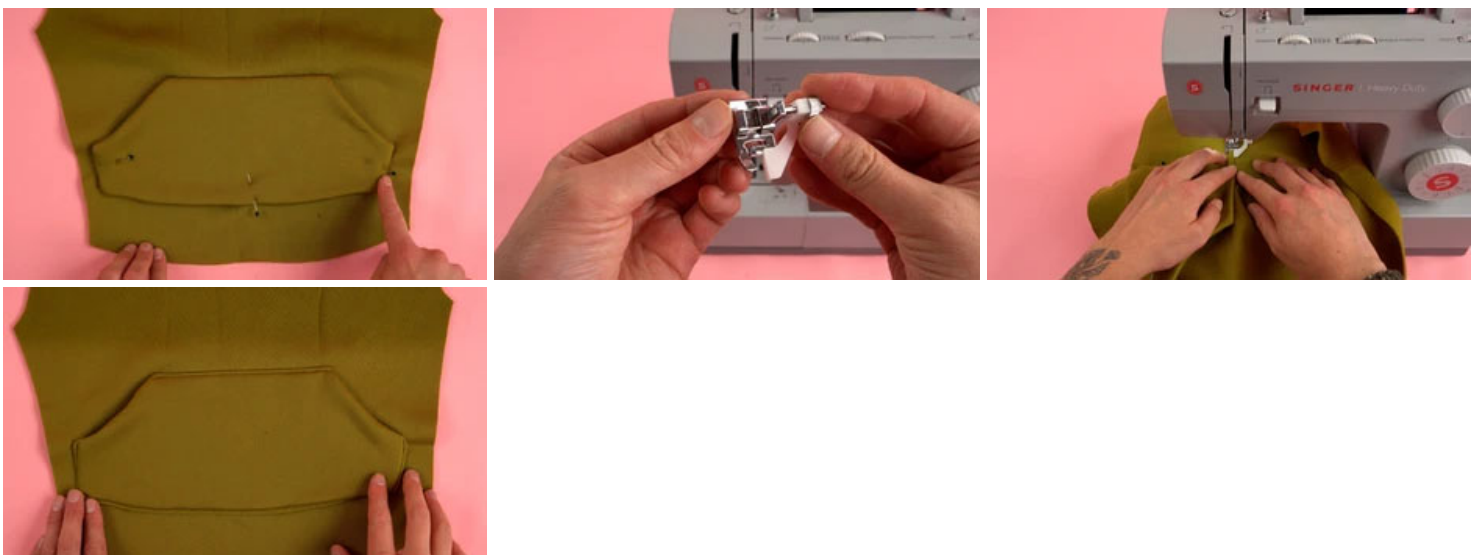






1. Grab BACK PANEL.
2. Open back panel up and place the pocket in the center 2.5-3 inches from the bottom.
3. Flip the panel directly up. Reflecting it on the up edge.
4. Stitch on the inside of the top edge.

## STEP 10

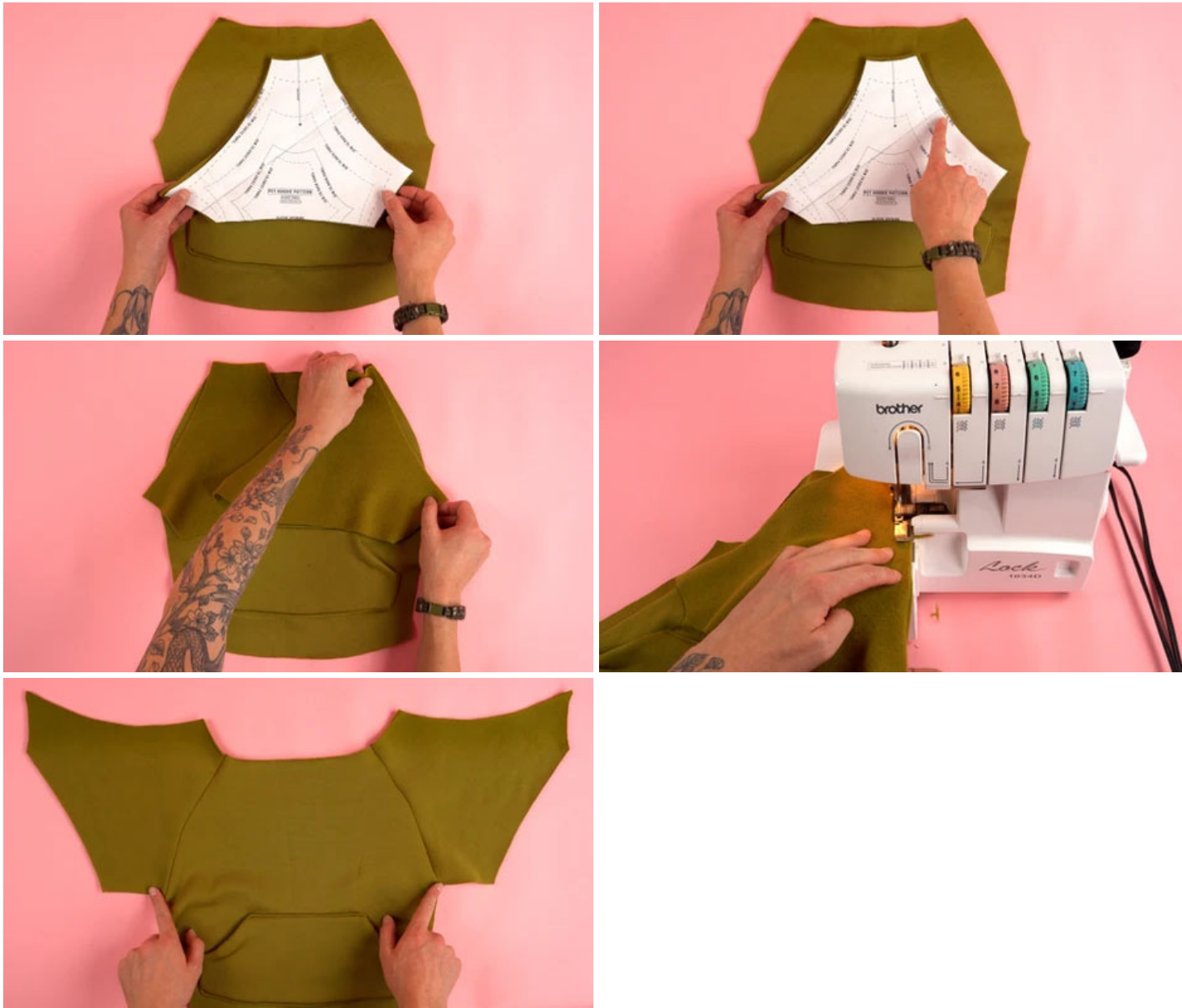


1. Flip pocket back down.
2. Pin pocket flat.

Let's Chat!

3. Top stitch the all edges except diagonal hand openings.
4. Edge presser foot will help keep stitch straight with top stitching.

## STEP 11



1. Grab both sleeve panels.
2. Make sure you mark each side to keep edges organized.
3. Place right sides together. Lining up sleeve back edge with back panel sleeve edge.
4. Repeat for opposite sleeve.
5. Stitch both edges.

## STEP 12





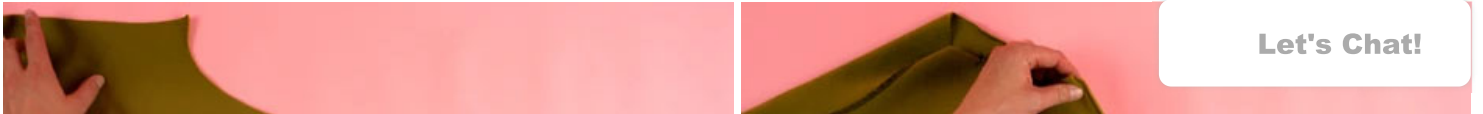
1. Point seam allowance towards back panel.
2. Top stitch both of the sleeve seams.
3. This will add both strength and style to the hoodie.

### STEP 13



1. Grab CHEST PANEL.
2. With right sides together. Line up the sleeve opening with the chest sleeve edge.
3. Stitch edge at .25 inch seam allowance.
4. Top stitch edge after sewing.

### STEP 14



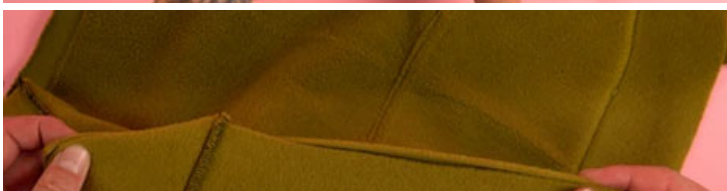
Let's Chat!





1. Grab opposite sleeve opening edge.
2. Place right sides together.
3. Stitch edge at .25 inch seam allowance.
4. Top stitch after sewing.

## STEP 15

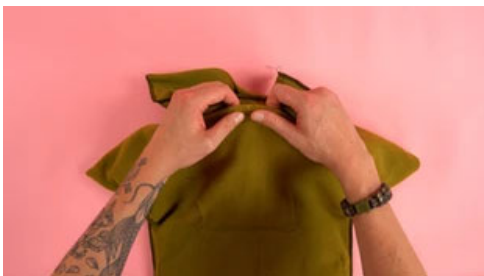
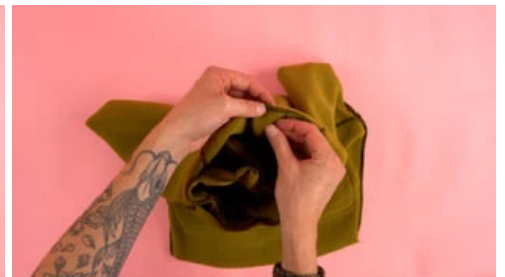


Let's Chat!



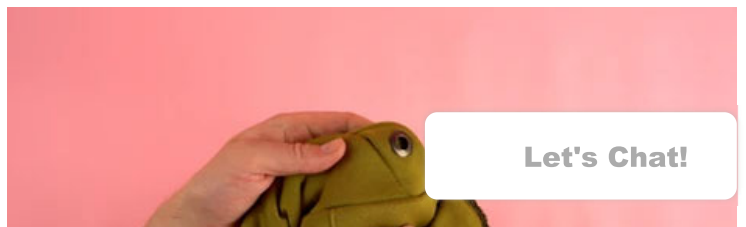
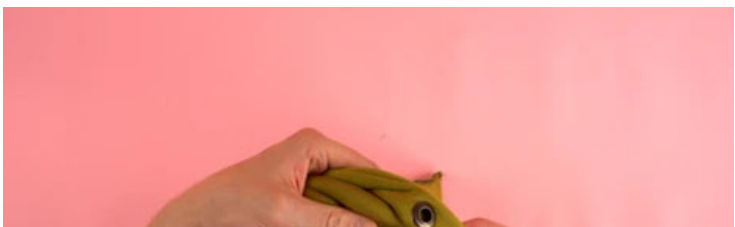
1. Flip the right sides together.
2. Line up the are pit seams.
3. Stitch side seams at .25 inch seam allowance.

## STEP 16



1. Mark centers on both chest and back panel.
2. Place hood in neck opening with right sides together.
3. Line top hood seam up with back center mark.
4. Line front of hood up with chest center mark.
5. Pin into position.
6. Stitch around entire edge at .25 inch seam allowance.

## STEP 17



Let's Chat!



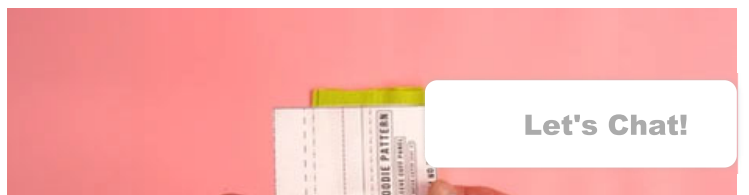
1. Point seam allowance down towards body panels.
2. Top stitch entire edge.

## STEP 18



1. Flip right sides out and double check all seams.

## STEP 19



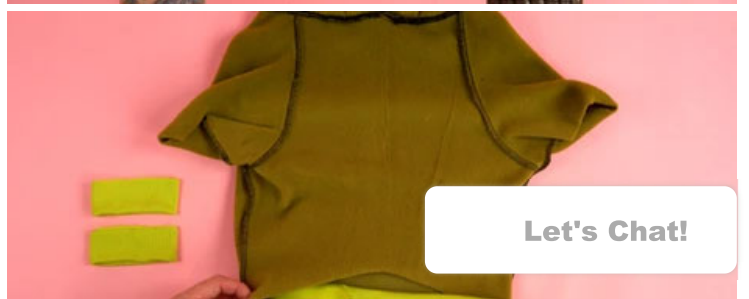
Let's Chat!





1. Grab WAISTBAND and SLEEVE CUFF PANELS.
2. Fold in half with the right sides together.
3. Stitch edge opposite of the fold at .25 inch seam allowance.

## STEP 20



Let's Chat!



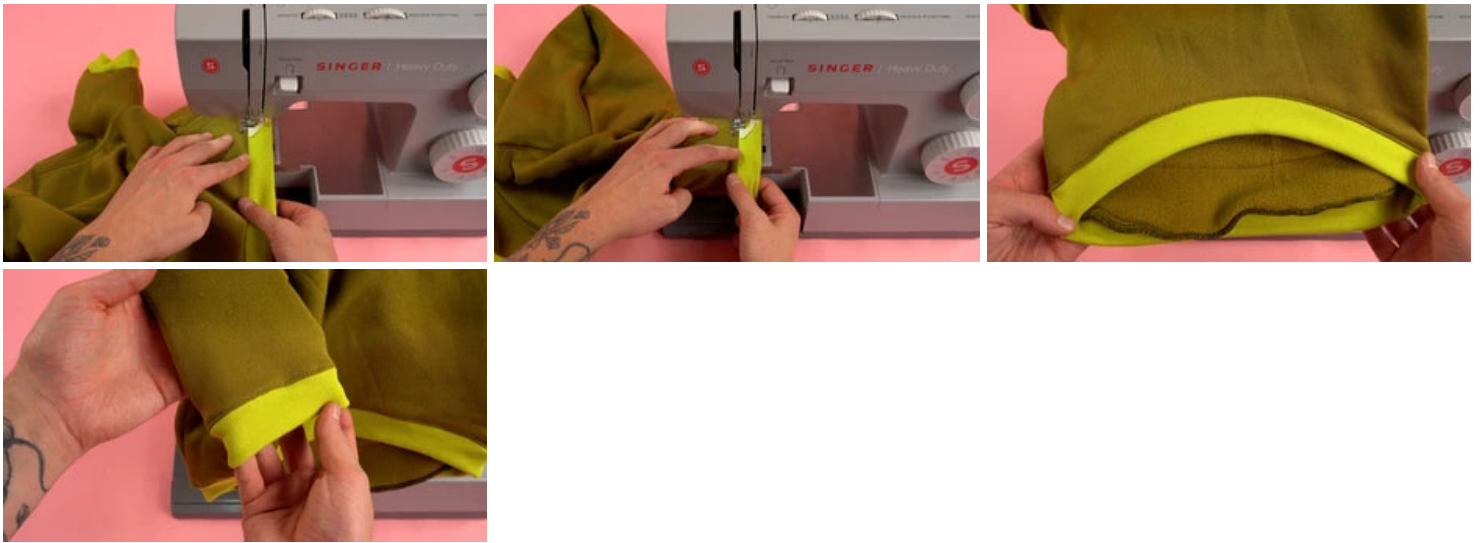
1. After stitching ribbing. Fold in half to make clean bottom edge.
2. Repeat process for all ribbing panels.
3. Place waistband on the inside of the bottom edge with right sides together.
4. Line up the bottom edge with the bottom edge of the ribbing.
5. Ribbing is sorter so you will have to stretch to make even with hoodie edge.
6. Pin into position and stitch entire edge at .25 inch seam allowance.

## STEP 21



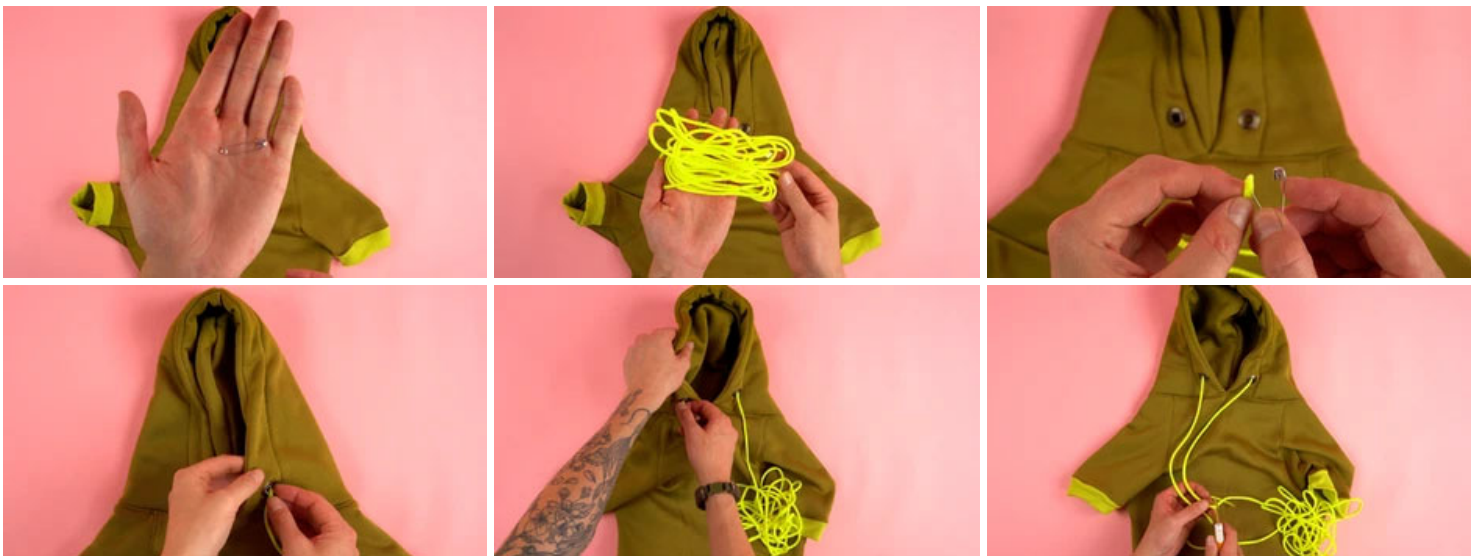
Let's Chat!





1. Fold seam allowance towards the body.
2. Top stitch around waistband and both cuffs.

## STEP 22



1. Attach safety pin to end of cord.
2. Thread safety pin through eyelet.
3. Work cord through cord path in hood.
4. Pull cord out opposite eyelet.

## STEP 23



Let's Chat!



1. Trim cord to desired length.
2. Use lighter to singe cord ends.

### STEP 24



1. Add cord stopper after finishing cord ends.
2. Slide cord stopper up.

### STEP 25

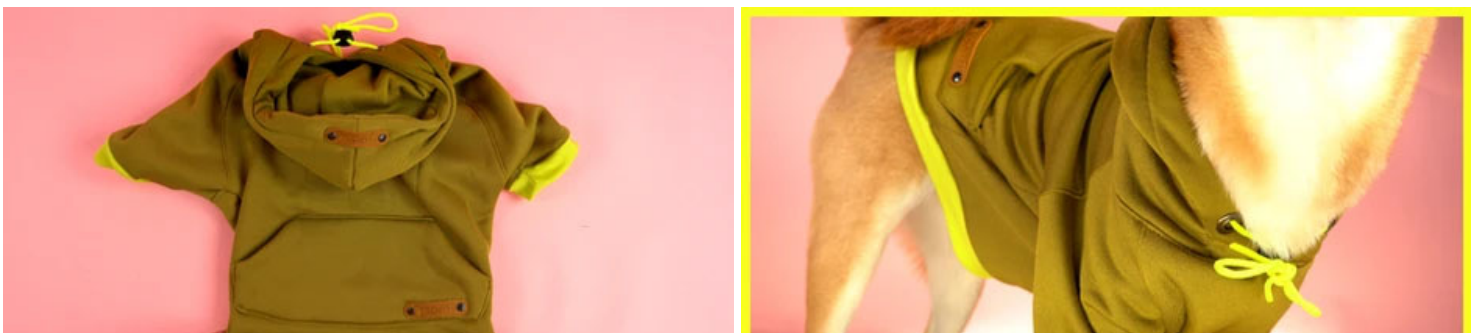


Let's Chat!



1. Fold hood on back panel.
2. Mark center of hood and where the hood center touches the back panel.
3. Grab snap button.
4. Cut hole on marked areas.
5. Place button snap in hold and press into position.
6. Snap bottom closed. This snap will help keep the hood from flopping in your pets face.

## **FINISHED**





1. The final step is adding your custom branding I recommend adding tabs to the front elastic loops for easy cinch adjustment. Adding a branded leather patch to your pet jacket is a fantastic way to customize and elevate the final product. By incorporating your brand, you not only enhance the aesthetic appeal but also infuse a sense of identity and uniqueness into the design. Here's how the process works, especially with the use of double-sided rivets, to secure the branded leather effectively:
  - a. **Branded Leather Creation:** The first step involves creating a leather patch that carries your brand's logo or name. This can be achieved through various methods such as stamping, burning, laser engraving, or embossing, depending on the desired effect and the resources available. The key is to ensure clarity and durability of the branding on the leather, as this will be a prominent feature of the pet hoodie.
  - b. **Positioning:** Once the branded leather patch is ready, the next step is to decide on its placement on the pet hoodie. The location is crucial as it affects visibility and aesthetics. Common spots include the front center, where it's most visible, or on a discreet side for a more understated approach. The goal is to choose a spot that complements the design of the pet hoodie and enhances its overall look.
  - c. **Using Double-Sided Rivets:** Double-sided rivets are chosen for their strength and ability to securely fasten the leather patch without damaging the materials. To attach the patch, small holes are made in the corners of the leather patch and corresponding spots on the pet hoodie. The double-sided rivets are then inserted through these holes from the underside of the pet hoodie fabric, through the leather patch, and capped on the top side. A rivet setter tool is used to clamp down the rivets, ensuring a tight and secure attachment.

Adding a branded leather patch with double-sided rivets to a pet hoodie not only personalizes the item but also significantly boosts its value, making it a unique piece that stands out. This customization is a testament to craftsmanship and attention to detail, reflecting the maker's pride and the brand's identity. It transforms the pet jacket from a mere accessory into a statement piece, enhancing its appeal to customers looking for something special and personal.

**Thank you!** for taking the time to explore our pet hoodie sewing project! It's been a pleasure to share this creative journey with you, and I sincerely hope you enjoyed the process of making your very own pet hoodie. Crafting something with your own hands is a rewarding experience, and using your creativity to produce a beautiful, finished product is truly special. I hope that your pet hoodie not only turned out great but also reflects your unique style and creativity. Thank you again for joining in on this sewing adventure.

---